

BMP1 monoclonal antibody

Catalog: MB62624

Host: Mouse

Reactivity: Human, Mouse, Rat

BackGround:**Product:**

PBS (PH 7.3) containing 1% BSA, 50% glycerol and 0.02% sodium azide.

Molecular Weight:

80.5 kDa(Predicted)

Swiss-Prot:

P13497

Purification&Purity:

Purified from mouse ascites fluids or tissue culture supernatant by affinity chromatography (protein A/G)

Applications:

WB 1:4000, IF 1:100

Storage&Stability:

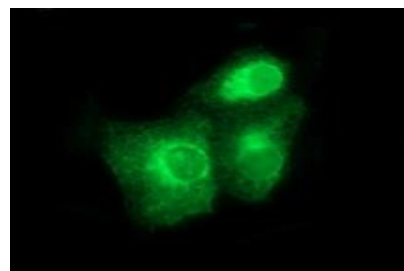
PBS (PH 7.3) containing 1% BSA, 50% glycerol and 0.02% sodium azide.

Specificity:

bone morphogenetic protein 1

DATA:

Western blot analysis of extracts (35ug) from 9 different cell lines by using anti-BMP1 monoclonal antibody at 1:200 dilution. (HepG2: human; HeLa: human; SVT2: mouse; A549: human; COS7: monkey; Jurkat: human; MDCK: canine; PC12: rat; MCF7: human)

**Note:**

For research use only, not for use in diagnostic procedure.

Bioworld Technology, Inc.

Add: 1660 South Highway 100, Suite 500 St. Louis Park, MN 55416, USA.

Email: info@bioworld.com

Tel: 6123263284

Fax: 6122933841

Bioworld technology, co. Ltd.

Add: No 9, weidi road Qixia District Nanjing, 210046, P. R. China.

Email: info@biogot.com

Tel: 0086-025-68037686

Fax: 0086-025-68035151