

## AFAP1L2 monoclonal antibody

Catalog: MB22304

Host: Mouse

Reactivity: Human

### BackGround:

AFAP1L2 (Actin Filament Associated Protein 1 Like 2) is a Protein Coding gene. Among its related pathways are Cytoskeletal Signaling. GO annotations related to this gene include SH3 domain binding and protein tyrosine kinase activator activity. An important paralog of this gene is AFAP1.

### Product:

Purified antibody in PBS with 0.05% sodium azide

### Molecular Weight:

91.3kDa

### Swiss-Prot:

Q8N4X5

### Purification&Purity:

The antibody was affinity-purified from mouse ascites by affinity-chromatography using epitope-specific immunogen and the purity is > 95% (by SDS-PAGE).

### Applications:

FC:1/200 - 1/400

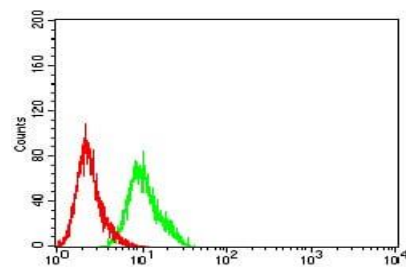
### Storage&Stability:

Store at 4 °C short term. Aliquot and store at -20 °C long term. Avoid freeze-thaw cycles.

### Isotype:

Mouse IgG1

### DATA:



Flow cytometric analysis of HeLa cells using AFAP1L2 mouse mAb (green) and negative control (red).

### Note:

For research use only, not for use in diagnostic procedure.

### Bioworld Technology, Inc.

Add: 1660 South Highway 100, Suite 500 St. Louis Park, MN 55416, USA.

Email: [info@bioworld.com](mailto:info@bioworld.com)

Tel: 6123263284

Fax: 6122933841

### Bioworld technology, co. Ltd.

Add: No 9, weidi road Qixia District Nanjing, 210046, P. R. China.

Email: [info@biogot.com](mailto:info@biogot.com)

Tel: 0086-025-68037686

Fax: 0086-025-68035151