

ASH2L monoclonal antibody

Catalog: MB22301

Host: Mouse

Reactivity: Human, Mouse

BackGround:

ASH2L (Ash2 (Absent, Small, Or Homeotic)-Like (Drosophila)) is a Protein Coding gene. Diseases associated with ASH2L include Kabuki Syndrome 1. Among its related pathways are Developmental Biology and Signaling by Wnt. GO annotations related to this gene include transcription regulatory region DNA binding and histone methyltransferase activity (H3-K4 specific).

Product:

Purified antibody in PBS with 0.05% sodium azide

Molecular Weight:

68.7kDa

Swiss-Prot:

Q9UBL3

Purification&Purity:

The antibody was affinity-purified from mouse ascites by affinity-chromatography using epitope-specific immunogen and the purity is > 95% (by SDS-PAGE).

Applications:

WB:1/500 - 1/2000 IHC:1/200 - 1/1000 FC:1/200 - 1/400

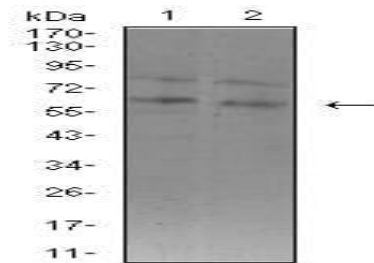
Storage&Stability:

Store at 4 °C short term. Aliquot and store at -20 °C long term. Avoid freeze-thaw cycles.

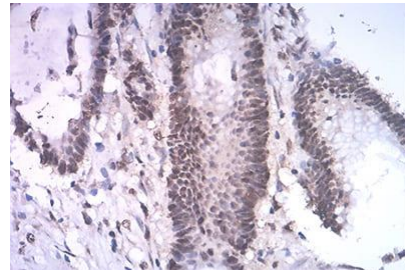
Isotype:

Mouse IgG1

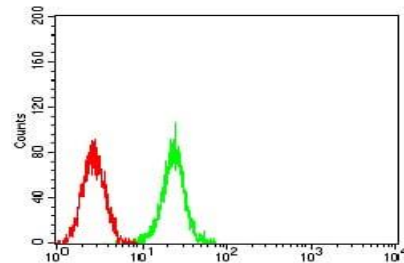
DATA:



Western blot analysis using ASH2L mouse mAb against K562 (1) and F9 (2) cell lysate.



Immunohistochemical analysis of paraffin-embedded human colon cancer tissues using ASH2L mouse mAb with DAB staining.



Flow cytometric analysis of K562 cells using ASH2L mouse mAb (green) and negative control (red).

Note:

For research use only, not for use in diagnostic procedure.

Bioworld Technology, Inc.

Add: 1660 South Highway 100, Suite 500 St. Louis Park, MN 55416, USA.

Email: info@bioworld.com

Tel: 6123263284

Fax: 6122933841

Bioworld technology, co. Ltd.

Add: No 9, weidi road Qixia District Nanjing, 210046, P. R. China.

Email: info@biogot.com

Tel: 0086-025-68037686

Fax: 0086-025-68035151