

KRT10 monoclonal antibody

Catalog: MB22271

Host: Mouse

Reactivity: Human, Mouse, Monkey, Rat

BackGround:

This gene encodes a member of the type I (acidic) cyto-keratin family, which belongs to the superfamily of intermediate filament (IF) proteins. Keratins are hetero-polymeric structural proteins which form the intermediate filament. These filaments, along with actin microfila-ments and microtubules, compose the cytoskeleton of ep-ithelial cells. Mutations in this gene are associated with epidermolytic hyperkeratosis. This gene is located within a cluster of keratin family members on chromosome 17q21.

Product:

Purified antibody in PBS with 0.05% sodium azide

Molecular Weight:

58.8kDa

Swiss-Prot:

P13645

Purification&Purity:

The antibody was affinity-purified from mouse ascites by affinity-chromatography using epitope-specific immuno-gen and the purity is > 95% (by SDS-PAGE).

Applications:

WB:1/500 - 1/2000 IHC:1/200 - 1/1000 FC:1/200 - 1/400

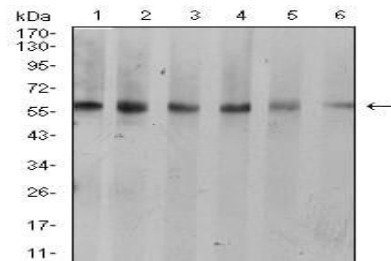
Storage&Stability:

Store at 4 °C short term. Aliquot and store at -20 °C long term. Avoid freeze-thaw cycles.

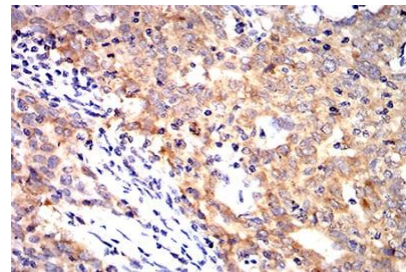
Isotype:

Mouse IgG1

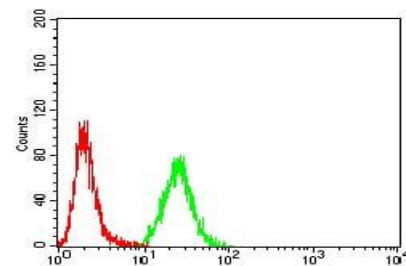
DATA:



Western blot analysis using KRT10 mouse mAb against A431 (1), C6 (2), COS7 (3), Jurkat (4), NIH/3T3 (5), and HEK293 (6) cell lysate.



Immunohistochemical analysis of paraffin-embedded human breast cancer tissues using KRT10 mouse mAb with DAB staining.



Flow cytometric analysis of HeLa cells using KRT10 mouse mAb (green) and negative control (red).

Note:

For research use only, not for use in diagnostic procedure.

Bioworld Technology, Inc.

Add: 1660 South Highway 100, Suite 500 St. Louis Park, MN 55416, USA.

Email: info@bioworld.com

Tel: 6123263284

Fax: 6122933841

Bioworld technology, co. Ltd.

Add: No 9, weidi road Qixia District Nanjing, 210046, P. R. China.

Email: info@biogot.com

Tel: 0086-025-68037686

Fax: 0086-025-68035151