

## RALB monoclonal antibody

Catalog: MB22259

Host: Mouse

Reactivity: Human, Mouse, Monkey

### BackGround:

This gene encodes a GTP-binding protein that belongs to the small GTPase superfamily and Ras family of proteins. GTP-binding proteins mediate the transmembrane signaling initiated by the occupancy of certain cell surface receptors.

### Product:

Purified antibody in PBS with 0.05% sodium azide

### Molecular Weight:

23.4kDa

### Swiss-Prot:

P11234

### Purification&Purity:

The antibody was affinity-purified from mouse ascites by affinity-chromatography using epitope-specific immunogen and the purity is > 95% (by SDS-PAGE).

### Applications:

WB:1/500 - 1/2000 IHC:1/200 - 1/1000 FC:1/200 - 1/400

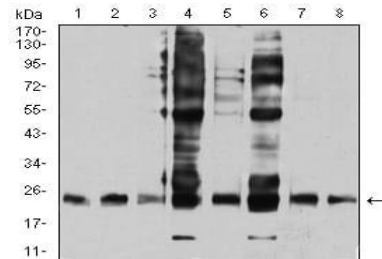
### Storage&Stability:

Store at 4 °C short term. Aliquot and store at -20 °C long term. Avoid freeze-thaw cycles.

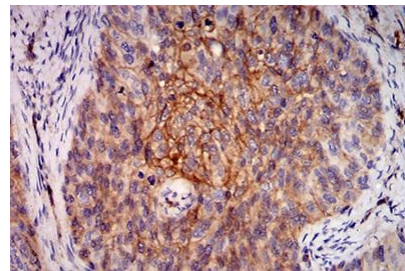
### Isotype:

Mouse IgG2b

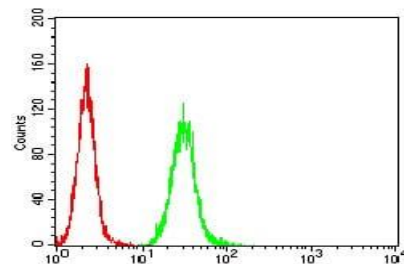
### DATA:



Western blot analysis using RALB mouse mAb against HepG2 (1), COS7 (2), NIH/3T3 (3), A549 (4), U251 (5), HT-29 (6), HEK293 (7), and LOVO (8) cell lysate.



Immunohistochemical analysis of paraffin-embedded human cervical cancer tissues using RALB mouse mAb with DAB staining.



Flow cytometric analysis of HeLa cells using RALB mouse mAb (green) and negative control (red).

### Note:

For research use only, not for use in diagnostic procedure.

### Bioworld Technology, Inc.

Add: 1660 South Highway 100, Suite 500 St. Louis Park, MN 55416, USA.

Email: [info@bioworld.com](mailto:info@bioworld.com)

Tel: 6123263284

Fax: 6122933841

### Bioworld technology, co. Ltd.

Add: No 9, weidi road Qixia District Nanjing, 210046, P. R. China.

Email: [info@biogot.com](mailto:info@biogot.com)

Tel: 0086-025-68037686

Fax: 0086-025-68035151