

AGR2 monoclonal antibody

Catalog: MB22215

Host: Mouse

Reactivity: Human

BackGround:

AGR2 (Anterior Gradient 2, Protein Disulphide Isomerase Family Member) is a Protein Coding gene. Diseases associated with AGR2 include pancreatic ductal adenocarcinoma. Among its related pathways are Tyrosine Kinases / Adaptors and Adhesion. GO annotations related to this gene include dystroglycan binding. An important paralog of this gene is TXNDC12.

Product:

Purified antibody in PBS with 0.05% sodium azide

Molecular Weight:

20kDa

Swiss-Prot:

O95994

Purification&Purity:

The antibody was affinity-purified from mouse ascites by affinity-chromatography using epitope-specific immunogen and the purity is > 95% (by SDS-PAGE).

Applications:

IHC:1/200 - 1/1000 FC:1/200 - 1/400

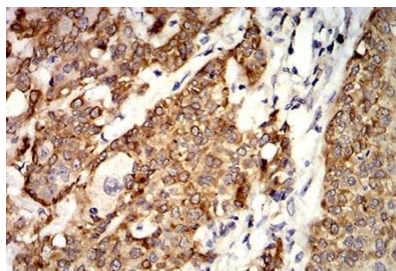
Storage&Stability:

Store at 4 °C short term. Aliquot and store at -20 °C long term. Avoid freeze-thaw cycles.

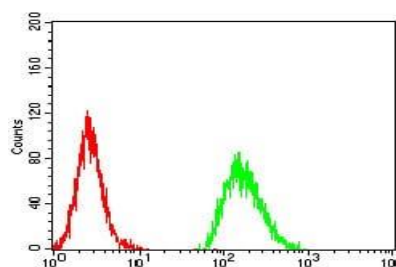
Isotype:

Mouse IgG1

DATA:



Immunohistochemical analysis of paraffin-embedded human bladder cancer tissues using AGR2 mouse mAb with DAB staining.



Flow cytometric analysis of MCF-7 cells using AGR2 mouse mAb (green) and negative control (red).

Note:

For research use only, not for use in diagnostic procedure.

Bioworld Technology, Inc.

Add: 1660 South Highway 100, Suite 500 St. Louis Park, MN 55416, USA.

Email: info@bioworld.com

Tel: 6123263284

Fax: 6122933841

Bioworld technology, co. Ltd.

Add: No 9, weidi road Qixia District Nanjing, 210046, P. R. China.

Email: info@biogot.com

Tel: 0086-025-68037686

Fax: 0086-025-68035151