

IghA1 monoclonal antibody

Catalog: MB22209

Host: Mouse

Reactivity: Human, Mouse, Monkey

BackGround:

IGHA1 (Immunoglobulin Heavy Constant Alpha 1) is a Protein Coding gene. Diseases associated with IGH A1 include pseudotumor cerebri. Among its related pathways are Vesicle-mediated transport and Regulation of nuclear SMAD2/3 signaling. GO annotations related to this gene include antigen binding and immunoglobulin receptor binding. An important paralog of this gene is IGHG4.

Product:

Purified antibody in PBS with 0.05% sodium azide

Molecular Weight:

37.6kDa

Swiss-Prot:

P01876

Purification&Purity:

The antibody was affinity-purified from mouse ascites by affinity-chromatography using epitope-specific immunogen and the purity is > 95% (by SDS-PAGE).

Applications:

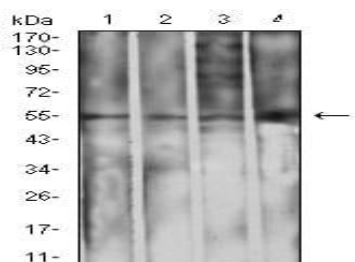
WB:1/500 - 1/2000 IHC:1/200 - 1/1000 IF:1/50 - 1/250
FC:1/200 - 1/400

Storage&Stability:

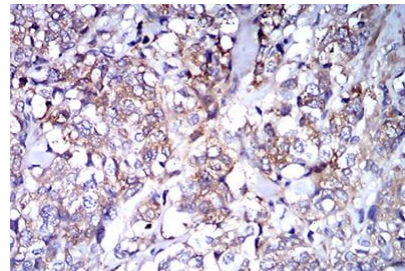
Store at 4 °C short term. Aliquot and store at -20 °C long term. Avoid freeze-thaw cycles.

Isotype:

Mouse IgG1

DATA:

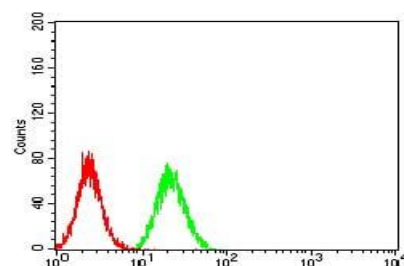
Western blot analysis using IghA1 mouse mAb against L1210 (1), THP-1 (2), HepG2 (3), and COS7 (4) cell lysate.



Immunohistochemical analysis of paraffin-embedded human breast cancer tissues using IghA1 mouse mAb with DAB staining.



Immunofluorescence analysis of HeLa cells using IghA1 mouse mAb (green). Blue: DRAQ5 fluorescent DNA dye. Red: Actin filaments have been labeled with Alexa Fluor- 555 phalloidin. Secondary antibody from Fisher (Cat#: 35503)



Flow cytometric analysis of HeLa cells using IghA1 mouse mAb (green) and negative control (red).

Note:

For research use only, not for use in diagnostic procedure.

Bioworld Technology, Inc.

Add: 1660 South Highway 100, Suite 500 St. Louis Park, MN 55416, USA.

Email: info@bioworld.com

Tel: 6123263284

Fax: 6122933841

Bioworld technology, co. Ltd.

Add: No 9, weidi road Qixia District Nanjing, 210046, P. R. China.

Email: info@biogot.com

Tel: 0086-025-68037686

Fax: 0086-025-68035151