

## KLF2 monoclonal antibody

Catalog: MB22201

Host: Mouse

Reactivity: Human, Mouse

**BackGround:**

Kruppel-like factors (KLFs) are a family of broadly expressed zinc finger transcription factors. KLF2 regulates T-cell trafficking by promoting expression of the lipid-binding receptor S1P1 (S1PR1; MIM 601974) and the selectin CD62L (SELL; MIM 153240) (summary by Weinreich et al., 2009 [PubMed 19592277]).<br />

**Product:**

Purified antibody in PBS with 0.05% sodium azide

**Molecular Weight:**

37.4kDa

**Swiss-Prot:**

Q9Y5W3

**Purification&Purity:**

The antibody was affinity-purified from mouse ascites by affinity-chromatography using epitope-specific immunogen and the purity is > 95% (by SDS-PAGE).

**Applications:**

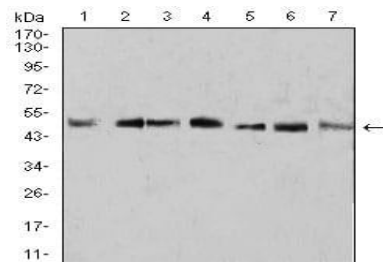
WB:1/500 - 1/2000

**Storage&Stability:**

Store at 4 °C short term. Aliquot and store at -20 °C long term. Avoid freeze-thaw cycles.

**Isotype:**

Mouse IgG1

**DATA:**

Western blot analysis using KLF2 mouse mAb against A431 (1), U937 (2), NIH/3T3 (3), Raw264.7 (4), SPC-A-1 (5), SK-MES-1 (6), and MOLT4 (7) cell lysate.

**Note:**

For research use only, not for use in diagnostic procedure.

**Bioworld Technology, Inc.**

Add: 1660 South Highway 100, Suite 500 St. Louis Park, MN 55416, USA.

Email: [info@bioworld.com](mailto:info@bioworld.com)

Tel: 6123263284

Fax: 6122933841

**Bioworld technology, co. Ltd.**

Add: No 9, weidi road Qixia District Nanjing, 210046, P. R. China.

Email: [info@biogot.com](mailto:info@biogot.com)

Tel: 0086-025-68037686

Fax: 0086-025-68035151