

IL1RAPL1 monoclonal antibody

Catalog: MB22125

Host: Mouse

Reactivity: Human

BackGround:

The protein encoded by this gene is a member of the interleukin 1 receptor family and is similar to the interleukin 1 accessory proteins. It is most closely related to interleukin 1 receptor accessory protein-like 2 (IL1RAPL2). This gene and IL1RAPL2 are located at a region on chromosome X that is associated with X-linked non-syndromic mental retardation. Deletions and mutations in this gene were found in patients with mental retardation. This gene is expressed at a high level in post-natal brain structures involved in the hippocampal memory system, which suggests a specialized role in the physiological processes underlying memory and learning abilities.

Product:

Purified antibody in PBS with 0.05% sodium azide

Molecular Weight:

80kDa

Swiss-Prot:

Q9NZN1

Purification&Purity:

The antibody was affinity-purified from mouse ascites by affinity-chromatography using epitope-specific immunogen and the purity is > 95% (by SDS-PAGE).

Applications:

WB:1/500 - 1/2000 IF:1/200 - 1/1000 FC:1/200 - 1/400

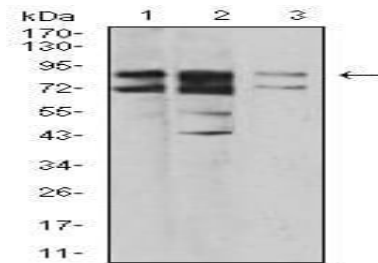
Storage&Stability:

Store at 4 °C short term. Aliquot and store at -20 °C long term. Avoid freeze-thaw cycles.

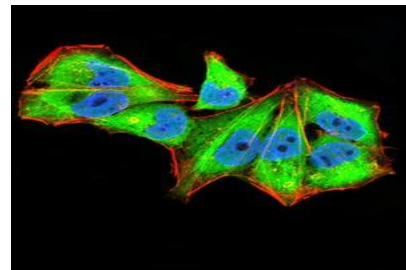
Isotype:

Mouse IgG1

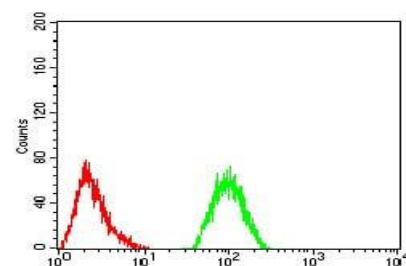
DATA:



Western blot analysis using IL1RAPL1 mouse mAb against A431 (1), SK-Hep-1 (2), and HL-7702 (3) cell lysate.



Immunofluorescence analysis of HeLa cells using IL1RAPL1 mouse mAb (green). Blue: DRAQ5 fluorescent DNA dye. Red: Actin filaments have been labeled with Alexa Fluor-555 phalloidin. Secondary antibody from Fisher (Cat#: 35503)



Flow cytometric analysis of HeLa cells using IL1RAPL1 mouse mAb (green) and negative control (red).

Note:

For research use only, not for use in diagnostic procedure.

Bioworld Technology, Inc.

Add: 1660 South Highway 100, Suite 500 St. Louis Park, MN 55416, USA.

Email: info@bioworld.com

Tel: 6123263284

Fax: 6122933841

Bioworld technology, co. Ltd.

Add: No 9, weidi road Qixia District Nanjing, 210046, P. R. China.

Email: info@biogot.com

Tel: 0086-025-68037686

Fax: 0086-025-68035151