

RAD50 monoclonal antibody

Catalog: MB22122

Host: Mouse

Reactivity: Human, Rat

BackGround:

The protein encoded by this gene is highly similar to *Saccharomyces cerevisiae* Rad50, a protein involved in DNA double-strand break repair. This protein forms a complex with MRE11 and NBS1. The protein complex binds to DNA and displays numerous enzymatic activities that are required for nonhomologous joining of DNA ends. This protein, cooperating with its partners, is important for DNA double-strand break repair, cell cycle checkpoint activation, telomere maintenance, and meiotic recombination. Knockout studies of the mouse homolog suggest this gene is essential for cell growth and viability. Mutations in this gene are the cause of Nijmegen break-age syndrome-like disorder.

Product:

Purified antibody in PBS with 0.05% sodium azide

Molecular Weight:

154kDa

Swiss-Prot:

Q92878

Purification&Purity:

The antibody was affinity-purified from mouse ascites by affinity-chromatography using epitope-specific immunogen and the purity is > 95% (by SDS-PAGE).

Applications:

WB:1/500 - 1/2000 IHC:1/200 - 1/1000 FC:1/200 - 1/400

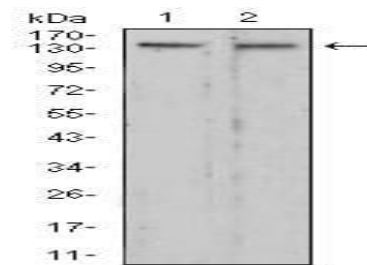
Storage&Stability:

Store at 4 °C short term. Aliquot and store at -20 °C long term. Avoid freeze-thaw cycles.

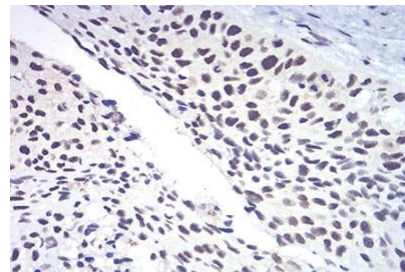
Isotype:

Mouse IgG2a

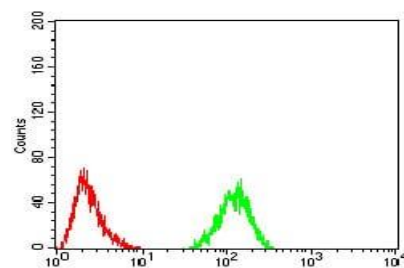
DATA:



Western blot analysis using RAD50 mouse mAb against C6 (1) and HepG2 (2) cell lysate.



Immunohistochemical analysis of paraffin-embedded human esophageal cancer tissues using RAD50 mouse mAb with DAB staining.



Flow cytometric analysis of HeLa cells using RAD50 mouse mAb (green) and negative control (red).

Note:

For research use only, not for use in diagnostic procedure.

Bioworld Technology, Inc.

Add: 1660 South Highway 100, Suite 500 St. Louis Park, MN 55416, USA.

Email: info@bioworld.com

Tel: 6123263284

Fax: 6122933841

Bioworld technology, co. Ltd.

Add: No 9, weidi road Qixia District Nanjing, 210046, P. R. China.

Email: info@biogot.com

Tel: 0086-025-68037686

Fax: 0086-025-68035151