

## KDM5B monoclonal antibody

Catalog: MB21996

Host: Mouse

Reactivity: Human

### BackGround:

KDM5B (lysine (K)-specific demethylase 5B) is a protein-coding gene. Diseases associated with KDM5B include retinoblastoma. GO annotations related to this gene include oxidoreductase activity, acting on paired donors, with incorporation or reduction of molecular oxygen, 2-oxoglutarate as one donor, and incorporation of one atom each of oxygen into both donors and sequence-specific DNA binding transcription factor activity. An important paralog of this gene is KDM5C.

### Product:

Purified antibody in PBS with 0.05% sodium azide

### Molecular Weight:

175.6kDa

### Swiss-Prot:

Q9UGL1

### Purification&Purity:

The antibody was affinity-purified from mouse ascites by affinity-chromatography using epitope-specific immunogen and the purity is > 95% (by SDS-PAGE).

### Applications:

FC:1/200 - 1/400

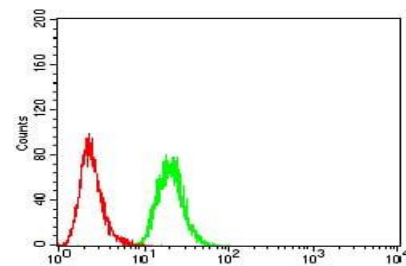
### Storage&Stability:

Store at 4 °C short term. Aliquot and store at -20 °C long term. Avoid freeze-thaw cycles.

### Isotype:

Mouse IgG1

### DATA:



Flow cytometric analysis of MCF-7 cells using KDM5B mouse mAb (green) and negative control (red).

### Note:

For research use only, not for use in diagnostic procedure.

### Bioworld Technology, Inc.

Add: 1660 South Highway 100, Suite 500 St. Louis Park, MN 55416, USA.

Email: [info@bioworld.com](mailto:info@bioworld.com)

Tel: 6123263284

Fax: 6122933841

### Bioworld technology, co. Ltd.

Add: No 9, weidi road Qixia District Nanjing, 210046, P. R. China.

Email: [info@biogot.com](mailto:info@biogot.com)

Tel: 0086-025-68037686

Fax: 0086-025-68035151