

RALA monoclonal antibody

Catalog: MB21994

Host: Mouse

Reactivity: Human, Mouse, Rat, Monkey

BackGround:

The product of this gene belongs to the small GTPase superfamily, Ras family of proteins. GTP-binding proteins mediate the transmembrane signaling initiated by the occupancy of certain cell surface receptors. This gene encodes a low molecular mass ras-like GTP-binding protein that shares about 50% similarity with other ras proteins.

Product:

Purified antibody in PBS with 0.05% sodium azide

Molecular Weight:

23.6kDa

Swiss-Prot:

P11233

Purification&Purity:

The antibody was affinity-purified from mouse ascites by affinity-chromatography using epitope-specific immunogen and the purity is > 95% (by SDS-PAGE).

Applications:

WB:1/500 - 1/2000 IHC:1/100 - 1/500 IF:1/50 - 1/500
FC:1/200 - 1/400

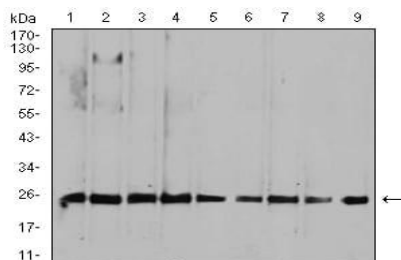
Storage&Stability:

Store at 4 °C short term. Aliquot and store at -20 °C long term. Avoid freeze-thaw cycles.

Isotype:

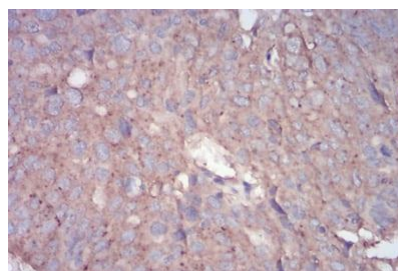
Mouse IgG1

DATA:

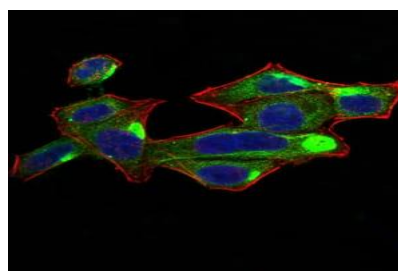


Western blot analysis using RALA mouse mAb against HepG2 (1),

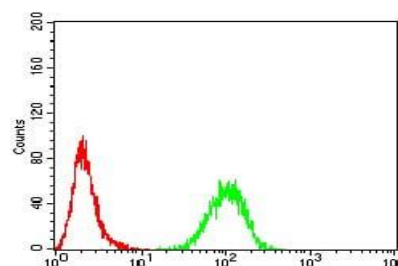
MCF-7 (2), A549 (3), K562 (4), Raji (5), MOLT4 (6), Hela (7), COS7 (8), and NIH3T3 (9) cell lysate.



Immunohistochemical analysis of paraffin-embedded human ovarian cancer tissues using RALA mouse mAb with DAB staining.



Immunofluorescence analysis of HeLa cells using RALA mouse mAb (green). Blue: DRAQ5 fluorescent DNA dye. Red: Actin filaments have been labeled with Alexa Fluor- 555 phalloidin. Secondary antibody from Fisher (Cat#: 35503)



Flow cytometric analysis of MCF-7 cells using RALA mouse mAb (green) and negative control (red).

Note:

For research use only, not for use in diagnostic procedure.

Bioworld Technology, Inc.

Add: 1660 South Highway 100, Suite 500 St. Louis Park, MN 55416, USA.

Email: info@bioworld.com

Tel: 6123263284

Fax: 6122933841

Bioworld technology, co. Ltd.

Add: No 9, weidi road Qixia District Nanjing, 210046, P. R. China.

Email: info@biogot.com

Tel: 0086-025-68037686

Fax: 0086-025-68035151