

HDAC2 monoclonal antibody

Catalog: MB21989

Host: Mouse

Reactivity: Human, Mouse, Monkey, Rat

BackGround:

This gene product belongs to the histone deacetylase family. Histone deacetylases act via the formation of large multiprotein complexes, and are responsible for the deacetylation of lysine residues at the N-terminal regions of core histones (H2A, H2B, H3 and H4). This protein forms transcriptional repressor complexes by associating with many different proteins, including YY1, a mammalian zinc-finger transcription factor. Thus, it plays an important role in transcriptional regulation, cell cycle progression and developmental events. Alternative splicing results in multiple transcript variants.

Product:

Purified antibody in PBS with 0.05% sodium azide

Molecular Weight:

55.4kDa

Swiss-Prot:

Q92769

Purification&Purity:

The antibody was affinity-purified from mouse ascites by affinity-chromatography using epitope-specific immunogen and the purity is > 95% (by SDS-PAGE).

Applications:

WB:1/500 - 1/2000 IHC:1/200 - 1/1000 FC:1/200 - 1/400

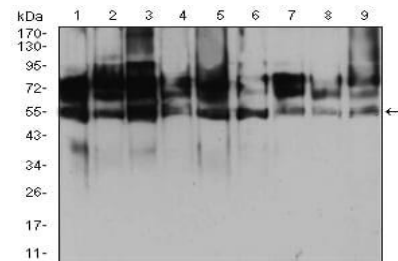
Storage&Stability:

Store at 4 °C short term. Aliquot and store at -20 °C long term. Avoid freeze-thaw cycles.

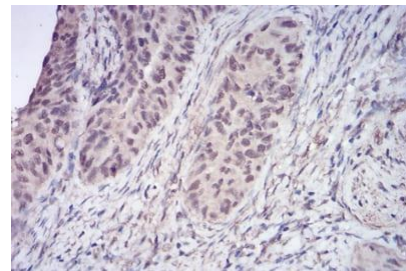
Isotype:

Mouse IgG1

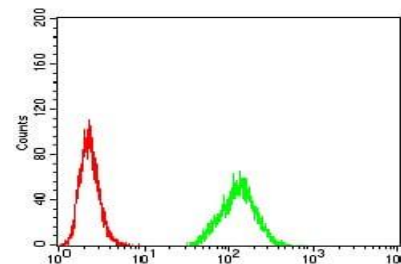
DATA:



Western blot analysis using HDAC2 mouse mAb against HeLa (1), Jurat (2), HepG2 (3), Hek293 (4), K562 (5), MCF-7 (6), NIH3T3 (7), COS7 (8) and PC-12 (9) cell lysate.



Immunohistochemical analysis of paraffin-embedded human cervical cancer tissues using HDAC2 mouse mAb with DAB staining.



Flow cytometric analysis of HeLa cells using HDAC2 mouse mAb (green) and negative control (red).

Note:

For research use only, not for use in diagnostic procedure.

Bioworld Technology, Inc.

Add: 1660 South Highway 100, Suite 500 St. Louis Park, MN 55416, USA.

Email: info@bioworld.com

Tel: 6123263284

Fax: 6122933841

Bioworld technology, co. Ltd.

Add: No 9, weidi road Qixia District Nanjing, 210046, P. R. China.

Email: info@biogot.com

Tel: 0086-025-68037686

Fax: 0086-025-68035151