

KBTBD8 monoclonal antibody

Catalog: MB21936

Host: Mouse

Reactivity: Human

BackGround:

KBTBD8 (kelch repeat and BTB (POZ) domain containing 8) is a protein-coding gene. An important paralog of this gene is KLHL21.

Product:

Purified antibody in PBS with 0.05% sodium azide

Molecular Weight:

68.8kDa

Swiss-Prot:

Q8NFY9

Purification&Purity:

The antibody was affinity-purified from mouse ascites by affinity-chromatography using epitope-specific immunogen and the purity is > 95% (by SDS-PAGE).

Applications:

WB:1/500 - 1/2000 FC:1/200 - 1/400

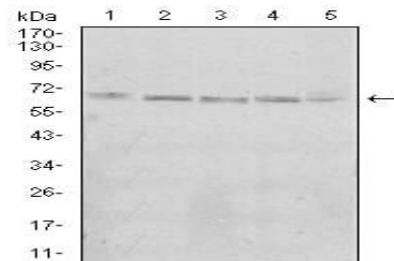
Storage&Stability:

Store at 4 °C short term. Aliquot and store at -20 °C long term. Avoid freeze-thaw cycles.

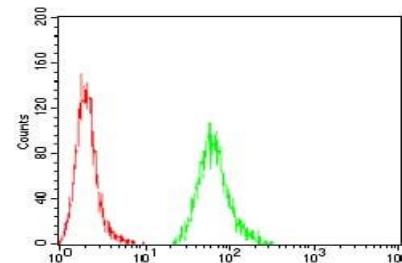
Isotype:

Mouse IgG1

DATA:



Western blot analysis using KBTBD8 mouse mAb against A431 (1), Jurkat (2), HeLa (3), K562 (4), and HEK293 (5) cell lysate.



Flow cytometric analysis of A431 cells using KBTBD8 mouse mAb (green) and negative control (red).

Note:

For research use only, not for use in diagnostic procedure.

Bioworld Technology, Inc.

Add: 1660 South Highway 100, Suite 500 St. Louis Park, MN 55416, USA.

Email: info@bioworld.com

Tel: 6123263284

Fax: 6122933841

Bioworld technology, co. Ltd.

Add: No 9, weidi road Qixia District Nanjing, 210046, P. R. China.

Email: info@biogot.com

Tel: 0086-025-68037686

Fax: 0086-025-68035151