

MMEL1 monoclonal antibody

Catalog: MB21830

Host: Mouse

Reactivity: Human

BackGround:

The protein encoded by this gene is a member of the neutral endopeptidase (NEP) or membrane metallo-endopeptidase (MME) family. Family members play important roles in pain perception, arterial pressure regulation, phosphate metabolism and homeostasis. This protein is a type II transmembrane protein and is thought to be expressed as a secreted protein. This gene is expressed mainly in testis with weak expression in the brain, kidney, and heart.

Product:

Purified antibody in PBS with 0.05% sodium azide.

Molecular Weight:

89.4kDa

Swiss-Prot:

Q495T6

Purification&Purity:

The antibody was affinity-purified from mouse ascites by affinity-chromatography using epitope-specific immunogen and the purity is > 95% (by SDS-PAGE).

Applications:

IHC:1/200 - 1/1000 FC:1/200 - 1/400

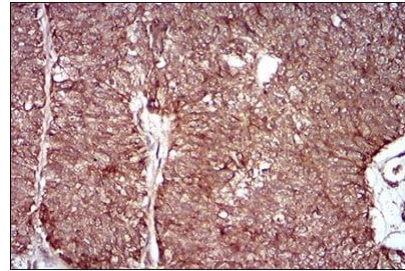
Storage&Stability:

Store at 4 °C short term. Aliquot and store at -20 °C long term. Avoid freeze-thaw cycles.

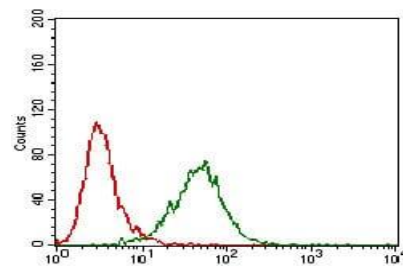
Isotype:

Mouse IgG1

DATA:



Immunohistochemical analysis of paraffin-embedded human ovarian cancer tissues using MMEL1 mouse mAb with DAB staining.



Flow cytometric analysis of HeLa cells using MMEL1 mouse mAb (green) and negative control (red).

Note:

For research use only, not for use in diagnostic procedure.

Bioworld Technology, Inc.

Add: 1660 South Highway 100, Suite 500 St. Louis Park, MN 55416, USA.

Email: info@bioworld.com

Tel: 6123263284

Fax: 6122933841

Bioworld technology, co. Ltd.

Add: No 9, weidi road Qixia District Nanjing, 210046, P. R. China.

Email: info@biogot.com

Tel: 0086-025-68037686

Fax: 0086-025-68035151