

B2M monoclonal antibody

Catalog: MB21783

Host: Mouse

Reactivity: Human

BackGround:

This gene encodes a serum protein found in association with the major histocompatibility complex (MHC) class I heavy chain on the surface of nearly all nucleated cells. The protein has a predominantly beta-pleated sheet structure that can form amyloid fibrils in some pathological conditions. A mutation in this gene has been shown to result in hypercatabolic hypoproteinemia.

Product:

Purified antibody in PBS with 0.05% sodium azide.

Molecular Weight:

13.7kDa

Swiss-Prot:

P61769

Purification&Purity:

The antibody was affinity-purified from mouse ascites by affinity-chromatography using epitope-specific immunogen and the purity is > 95% (by SDS-PAGE).

Applications:

WB:1/500 - 1/2000 IHC:1/200 - 1/1000 FC:1/200 - 1/400

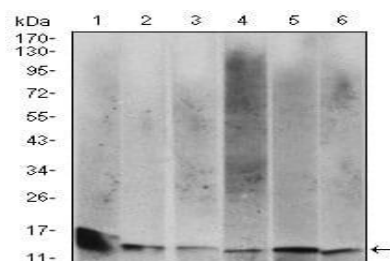
Storage&Stability:

Store at 4 °C short term. Aliquot and store at -20 °C long term. Avoid freeze-thaw cycles.

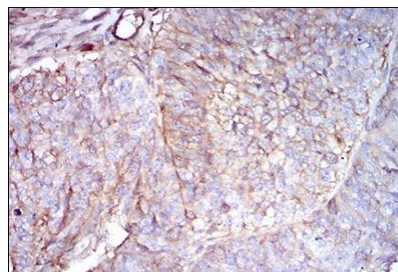
Isotype:

Mouse IgG2a

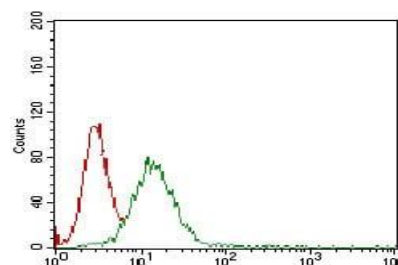
DATA:



Western blot analysis using B2M mouse mAb against Hela (1), HEK293 (2), HepG2 (3), RAJI (4), A431 (5) and Jurkat (6) cell lysate.



Immunohistochemical analysis of paraffin-embedded human ovarian cancer tissues using B2M mouse mAb with DAB staining.



Flow cytometric analysis of A431 cells using B2M mouse mAb (green) and negative control (red).

Note:

For research use only, not for use in diagnostic procedure.

Bioworld Technology, Inc.

Add: 1660 South Highway 100, Suite 500 St. Louis Park, MN 55416, USA.

Email: info@bioworld.com

Tel: 6123263284

Fax: 6122933841

Bioworld technology, co. Ltd.

Add: No 9, weidi road Qixia District Nanjing, 210046, P. R. China.

Email: info@biogot.com

Tel: 0086-025-68037686

Fax: 0086-025-68035151