

PAPLN monoclonal antibody

Catalog: MB21753

Host: Mouse

Reactivity: Human, Mouse

Background:

Papilin is an extracellular matrix glycoprotein involved in, thin matrix layers during gastrulation, matrix associated with wandering, phagocytic hemocytes, basement membranes and space-filling matrix during *Drosophila* development. Determination of its cDNA sequence led to the identification of *Caenorhabditis* and mammalian papilins. A distinctly conserved 'papilin cassette' of domains at the amino-end of papilins is also the carboxyl-end of the ADAMTS subgroup of secreted, matrix-associated metalloproteinases; this cassette contains one thrombospondin type 1 (TSR) domain, a specific cysteine-rich domain and several partial TSR domains. In vitro, papilin non-competitively inhibits procollagen N-proteinase, an ADAMTS metalloproteinase.

Product:

Purified antibody in PBS with 0.05% sodium azide

Molecular Weight:

137.7kDa

Swiss-Prot:

O95428

Purification&Purity:

The antibody was affinity-purified from mouse ascites by affinity-chromatography using epitope-specific immunogen and the purity is > 95% (by SDS-PAGE).

Applications:

WB: 1/500 - 1/2000 IF: 1/200 - 1/1000

Storage&Stability:

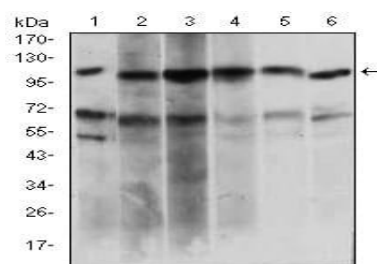
Store at 4 °C short term. Aliquot and store at -20 °C long

term. Avoid freeze-thaw cycles.

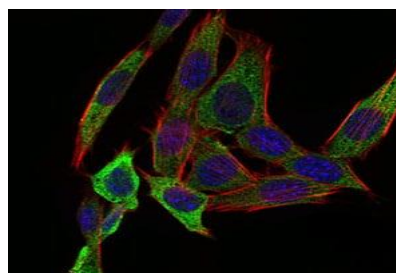
Isotype:

Mouse IgG1

DATA:



Western blot analysis using PAPLN mouse mAb against HeLa (1), HepG2 (2), OCM-1 (3), Raji (4), Jurkat (5), NIH/3T3 (6) cell lysate.



Immunofluorescence analysis of NIH/3T3 cells using PAPLN mouse mAb (green). Blue: DRAQ5 fluorescent DNA dye. Red: Actin filaments have been labeled with Alexa Fluor-555 phalloidin.

Note:

For research use only, not for use in diagnostic procedure.

Bioworld Technology, Inc.

Add: 1660 South Highway 100, Suite 500 St. Louis Park, MN 55416, USA.

Email: info@bioworld.com

Tel: 6123263284

Fax: 6122933841

Bioworld technology, co. Ltd.

Add: No 9, weidi road Qixia District Nanjing, 210046, P. R. China.

Email: info@biogot.com

Tel: 0086-025-68037686

Fax: 0086-025-68035151