

## CSNK2A2 monoclonal antibody

Catalog: MB21654

Host: Mouse

Reactivity: Human, Mouse, Rat, Monkey, Rabbit

### Background:

Casein kinase II (CK2) is a constitutively active, ubiquitously expressed serine/threonine protein kinase that is thought to have a regulatory function in cell proliferation, cell differentiation and apoptosis. CK2 functions as a tetrameric complex consisting of two regulatory beta-subunits and two catalytic units (alpha and alpha') in a homomeric or heteromeric conformation. Whilst the alpha- and alpha'-subunits are catalytically identical, proteins that regulate CK2, such as cdc2 and Hsp90, preferentially bind to the alpha and not the alpha'-subunit. CK2 can phosphorylate a number of key intracellular signaling proteins implicated in tumor suppression (p53 and PTEN) and tumorigenesis (myc, jun, NF-kappaB). CK2 is also thought to influence Wnt signaling via beta-catenin phosphorylation and the PI 3-K signaling pathway via the phosphorylation of Akt.

### Product:

Purified antibody in PBS with 0.05% sodium azide.

### Molecular Weight:

41.2kDa

### Swiss-Prot:

P19784

### Purification&Purity:

The antibody was affinity-purified from mouse ascites by affinity-chromatography using epitope-specific immunogen and the purity is > 95% (by SDS-PAGE).

### Applications:

WB: 1/500 - 1/2000 IHC: 1/100 - 1/500 FC: 1/200 - 1/400

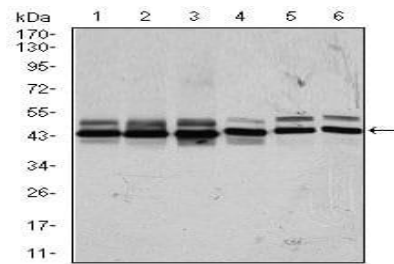
### Storage&Stability:

Store at 4 °C short term. Aliquot and store at -20 °C long term. Avoid freeze-thaw cycles.

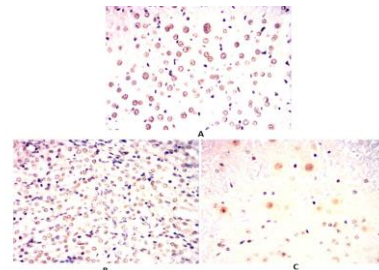
### Isotype:

Mouse IgG1

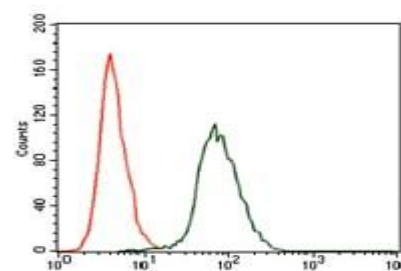
### DATA:



Western blot analysis using CSNK2A2 mouse mAb against HeLa (1), MCF-7 (2), HepG2 (3), Jurkat (4), NIH3T3 (5), and PC-12 (6) cell lysate.



Immunohistochemical analysis of paraffin-embedded Mouse kidney (A) Mouse kidney (B) Mouse cerebellum (C) using CSNK2A2 mouse mAb with DAB staining.



Flow cytometric analysis of HepG2 cells using CSNK2A2 mouse mAb (green) and negative control (red).

### Note:

For research use only, not for use in diagnostic procedure.

### Bioworld Technology, Inc.

Add: 1660 South Highway 100, Suite 500 St. Louis Park, MN 55416, USA.

Email: [info@bioworld.com](mailto:info@bioworld.com)

Tel: 6123263284

Fax: 6122933841

### Bioworld technology, co. Ltd.

Add: No 9, weidi road Qixia District Nanjing, 210046, P. R. China.

Email: [info@biogot.com](mailto:info@biogot.com)

Tel: 0086-025-68037686

Fax: 0086-025-68035151



## PRODUCT DATA SHEET

Bioworld Technology, Inc.

---

---

### **Bioworld Technology, Inc.**

**Add:** 1660 South Highway 100, Suite 500 St. Louis Park,  
MN 55416, USA.

**Email:** [info@bioworld.com](mailto:info@bioworld.com)

**Tel:** 6123263284

**Fax:** 6122933841

### **Bioworld technology, co. Ltd.**

**Add:** No 9, weidi road Qixia District Nanjing, 210046,  
P. R. China.

**Email:** [info@biogot.com](mailto:info@biogot.com)

**Tel:** 0086-025-68037686

**Fax:** 0086-025-68035151