

NR6A1 monoclonal antibody

Catalog: MB21642

Host: Mouse

Reactivity: Human

Background:

This gene encodes an orphan nuclear receptor which is a member of the nuclear hormone receptor family. Its expression pattern suggests that it may be involved in neurogenesis and germ cell development. The protein can homodimerize and bind DNA, but *in vivo* targets have not been identified. The gene expresses at least alternatively spliced transcript variants.

Product:

Purified antibody in PBS with 0.05% sodium azide

Molecular Weight:

54.3kDa

Swiss-Prot:

Q15406

Purification&Purity:

The antibody was affinity-purified from mouse ascites by affinity-chromatography using epitope-specific immunogen and the purity is > 95% (by SDS-PAGE).

Applications:

WB:1/500 - 1/2000 IHC:1/200 - 1/1000 IF:1/400
FC:1/200 - 1/400

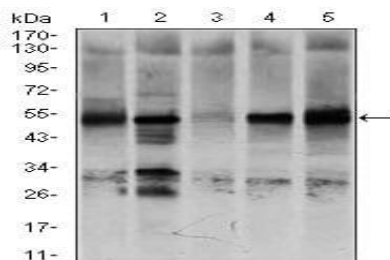
Storage&Stability:

Store at 4 °C short term. Aliquot and store at -20 °C long term. Avoid freeze-thaw cycles.

Isotype:

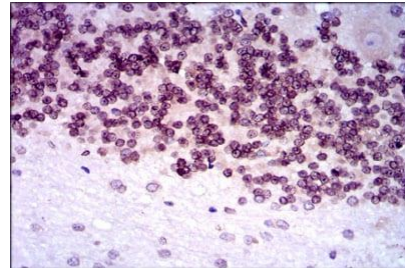
Mouse IgG1

DATA:



Western blot analysis using NR6A1 mouse mAb against K562 (1),

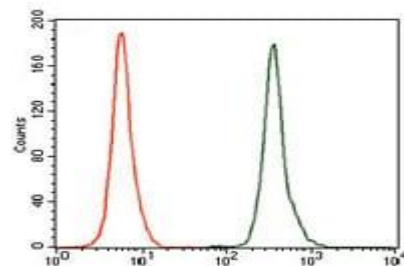
NTERA-2 (2), HEK293 (3), HUVE-12 (4), and HeLa (5) cell lysate.



Immunohistochemical analysis of paraffin-embedded human cerebellum tissues using NR6A1 mouse mAb with DAB staining.



Immunofluorescence analysis of HepG2 cells using NR6A1 mouse mAb (green). Blue: DRAQ5 fluorescent DNA dye.



Flow cytometric analysis of K562 cells using NR6A1 mouse mAb (green) and negative control (red).

Note:

For research use only, not for use in diagnostic procedure.

Bioworld Technology, Inc.

Add: 1660 South Highway 100, Suite 500 St. Louis Park, MN 55416, USA.

Email: info@bioworld.com

Tel: 6123263284

Fax: 6122933841

Bioworld technology, co. Ltd.

Add: No 9, weidi road Qixia District Nanjing, 210046, P. R. China.

Email: info@biogot.com

Tel: 0086-025-68037686

Fax: 0086-025-68035151