

mouse Lplunc1 monoclonal antibody

Catalog: MB21615

Host: Mouse

Reactivity: Human

BackGround:

Palate, lung, and nasal epithelium clone (Plunc, now re-named Splunc1) is a small secreted protein expressed in the oropharynx and upper airways of humans, mice, rats, and cows. This protein is structurally homologous to known mediators of host defense against gram-negative bacteria.

Product:

Purified antibody in PBS with 0.05% sodium azide

Molecular Weight:

52.4kDa

Swiss-Prot:

Q61114

Purification&Purity:

The antibody was affinity-purified from mouse ascites by affinity-chromatography using epitope-specific immunogen and the purity is > 95% (by SDS-PAGE).

Applications:

IHC:1/200 - 1/1000 IF:1/200 - 1/1000 FC:1/200 - 1/400

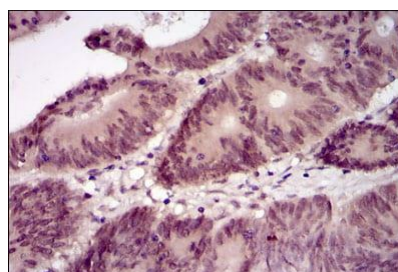
Storage&Stability:

Store at 4 °C short term. Aliquot and store at -20 °C long term. Avoid freeze-thaw cycles.

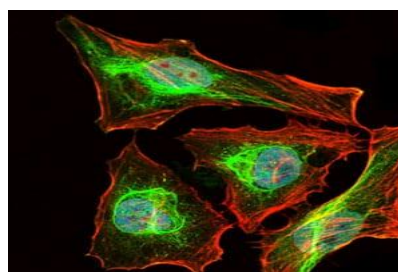
Isotype:

Mouse IgG1

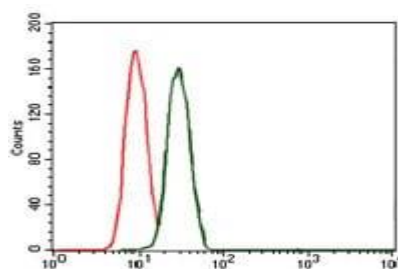
DATA:



Immunohistochemical analysis of paraffin-embedded human colon cancer tissues using Lplunc1 mouse mAb with DAB staining.



Immunofluorescence analysis of HeLa cells using Lplunc1 mouse mAb (green). Blue: DRAQ5 fluorescent DNA dye. Red: Actin filaments have been labeled with Alexa Fluor-555 phalloidin.



Flow cytometric analysis of MCF-7 cells using Lplunc1 mouse mAb (green) and negative control (red).

Note:

For research use only, not for use in diagnostic procedure.

Bioworld Technology, Inc.

Add: 1660 South Highway 100, Suite 500 St. Louis Park, MN 55416, USA.

Email: info@bioworld.com

Tel: 6123263284

Fax: 6122933841

Bioworld technology, co. Ltd.

Add: No 9, weidi road Qixia District Nanjing, 210046, P. R. China.

Email: info@biogot.com

Tel: 0086-025-68037686

Fax: 0086-025-68035151