

## YAP1 monoclonal antibody

Catalog: MB21575      Host: Mouse      Reactivity: Human, Mouse, Rat, Monkey, Rabbit

### Background:

This gene encodes the human ortholog of chicken YAP protein which binds to the SH3 domain of the Yes proto-oncogene product. This protein contains a WW domain that is found in various structural, regulatory and signaling molecules in yeast, nematode, and mammals, and may be involved in protein-protein interaction.

### Product:

Purified antibody in PBS with 0.05% sodium azide

### Molecular Weight:

### Swiss-Prot:

P46937

### Purification&Purity:

The antibody was affinity-purified from mouse ascites by affinity-chromatography using epitope-specific immunogen and the purity is > 95% (by SDS-PAGE).

### Applications:

WB: 1/500 - 1/2000    IHC: 1/100 - 1/500    FC: 1/200 - 1/400

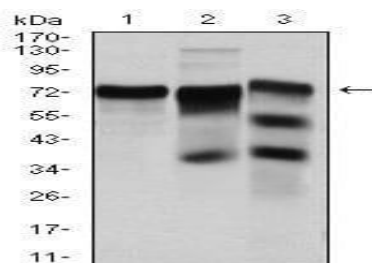
### Storage&Stability:

Store at 4 °C short term. Aliquot and store at -20 °C long term. Avoid freeze-thaw cycles.

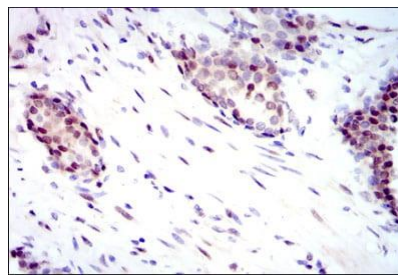
### Isotype:

Mouse IgG1

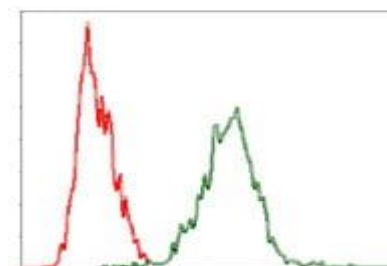
### DATA:



Western blot analysis using YAP1 mouse mAb against HeLa (1), C6 (2) and Cos7 (3) cell lysate.



Immunohistochemical analysis of paraffin-embedded human prostate cancer tissues using YAP1 mouse mAb with DAB staining.



Flow cytometric analysis of HeLa cells using YAP1 mouse mAb (green) and negative control (red).

### Note:

For research use only, not for use in diagnostic procedure.

### Bioworld Technology, Inc.

Add: 1660 South Highway 100, Suite 500 St. Louis Park, MN 55416, USA.

Email: [info@bioworld.com](mailto:info@bioworld.com)

Tel: 6123263284

Fax: 6122933841

### Bioworld technology, co. Ltd.

Add: No 9, weidi road Qixia District Nanjing, 210046, P. R. China.

Email: [info@biogot.com](mailto:info@biogot.com)

Tel: 0086-025-68037686

Fax: 0086-025-68035151