

## PRK2 monoclonal antibody

Catalog: MB21509

Host: Mouse

Reactivity: Human, Mouse, Rat, Monkey

### BackGround:

Protein-kinase-C-related kinases (PRKs) are part of the lipid-regulated protein kinases (PKC) which also include liver PAK & PKN. Human PRK1 and PRK2 share structurally similar catalytic domains, but less similar N-terminal regulatory regions suggesting different regulatory domain functions. PRK1 and PRK2, as well as a third member of this family, PRK3, show distinct patterns of expression in adult tissues. Additionally, the serine-threonine kinase PRK2 can be specifically cleaved by caspase-3 (and/or caspase-3-like subfamily members) during apoptosis.

### Product:

Purified antibody in PBS with 0.05% sodium azide.

### Molecular Weight:

140kDa

### Swiss-Prot:

Q16513

### Purification&Purity:

The antibody was affinity-purified from mouse ascites by affinity-chromatography using epitope-specific immunogen and the purity is > 95% (by SDS-PAGE).

### Applications:

WB:1/500 - 1/2000 IHC:1/200 - 1/1000 FC:1/200 - 1/400

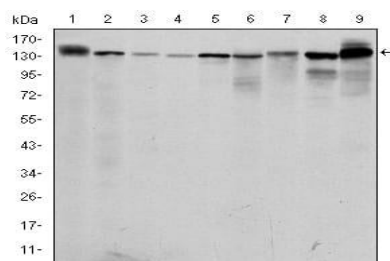
### Storage&Stability:

Store at 4 °C short term. Aliquot and store at -20 °C long term. Avoid freeze-thaw cycles.

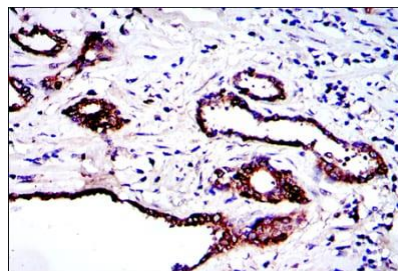
### Isotype:

Mouse IgG1

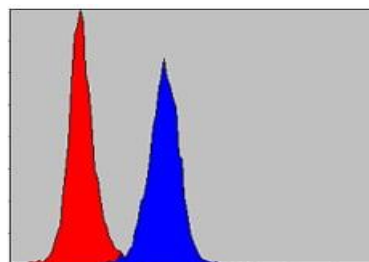
### DATA:



Western blot analysis using PRK2 mouse mAb against PC-12 (1), Cos7 (2), K562 (3), Jurkat (4), Hela (5), A431 (6), C6 (7), NIH/3T3 (8) and HEK293 (9) cell lysate.



Immunohistochemical analysis of paraffin-embedded human prostate tissues using PRK2 mouse mAb with DAB staining.



Flow cytometric analysis of NIH/3T3 cells using PRK2 mouse mAb (blue) and negative control (red).

### Note:

For research use only, not for use in diagnostic procedure.

### Bioworld Technology, Inc.

Add: 1660 South Highway 100, Suite 500 St. Louis Park, MN 55416, USA.

Email: [info@bioworld.com](mailto:info@bioworld.com)

Tel: 6123263284

Fax: 6122933841

### Bioworld technology, co. Ltd.

Add: No 9, weidi road Qixia District Nanjing, 210046, P. R. China.

Email: [info@biogot.com](mailto:info@biogot.com)

Tel: 0086-025-68037686

Fax: 0086-025-68035151