

GRK2 monoclonal antibody

Catalog: MB21463

Host: Mouse

Reactivity: Human, Mouse, Rat, Monkey

BackGround:

The product of this gene phosphorylates the beta-2-adrenergic receptor and appears to mediate agonist-specific desensitization observed at high agonist concentrations. This protein is an ubiquitous cytosolic enzyme that specifically phosphorylates the activated form of the beta-adrenergic and related G-protein-coupled receptors. Abnormal coupling of beta-adrenergic receptor to G protein is involved in the pathogenesis of the failing heart. (provided by RefSeq) Tissue specificity: Expressed in peripheral blood leukocytes

Product:

Ascitic fluid containing 0.03% sodium azide.

Molecular Weight:

80kDa

Swiss-Prot:

P25098

Purification&Purity:

The antibody was affinity-purified from mouse ascites by affinity-chromatography using epitope-specific immunogen and the purity is > 95% (by SDS-PAGE).

Applications:

WB: 1/500 - 1/2000 IHC: 1/200 - 1/1000 IF: 1/200 - 1/1000

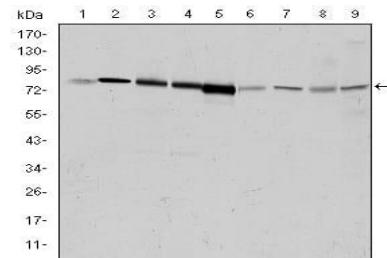
Storage&Stability:

Store at 4 °C short term. Aliquot and store at -20 °C long term. Avoid freeze-thaw cycles.

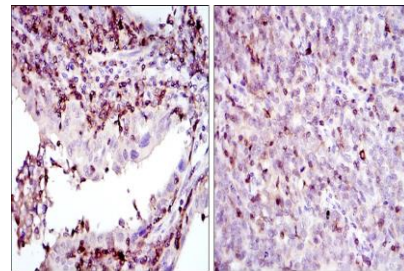
Isotype:

Mouse IgG1

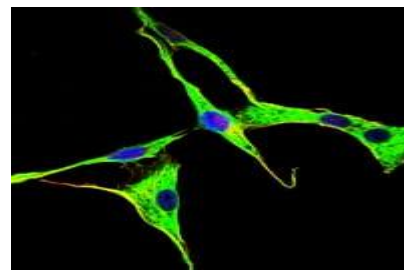
DATA:



Western blot analysis using GRK2 mouse mAb against HeLa (1), Jurkat (2), MOLT4 (3), RAJI (4), THP-1 (5), L1210 (6), Cos7 (7), PC-12 (8), and NIH/3T3 (9) cell lysate.



Immunohistochemical analysis of paraffin-embedded human endometrial cancer tissues (left) and cervical cancer tissues (right) using GRK2 mouse mAb with DAB staining.



Immunofluorescence analysis of NIH/3T3 cells using GRK2 mouse mAb (green). Blue: DRAQ5 fluorescent DNA dye.

Note:

For research use only, not for use in diagnostic procedure.

Bioworld Technology, Inc.

Add: 1660 South Highway 100, Suite 500 St. Louis Park, MN 55416, USA.

Email: info@bioworld.com

Tel: 6123263284

Fax: 6122933841

Bioworld technology, co. Ltd.

Add: No 9, weidi road Qixia District Nanjing, 210046, P. R. China.

Email: info@biogot.com

Tel: 0086-025-68037686

Fax: 0086-025-68035151