

MSX1 monoclonal antibody

Catalog: MB21461

Host: Mouse

Reactivity: Human

BackGround:

Drosophila, muscle segment (msh) homolog 1, homeo domain encoding gene, inhibiting MYOD1 expression, highly expressed in dental mesenchyme during critical bud stage, involved in epithelial-mesenchymal signaling in many organs, and in the pathogenesis of cleft lip and palate, interacting with MSX2 in mouse limb bud patterning. This gene encodes a member of the muscle segment homeobox gene family. The encoded protein functions as a transcriptional repressor during embryogenesis through interactions with components of the core transcription complex and other homeoproteins. It may also have roles in limb-pattern formation, craniofacial development, particularly odontogenesis, and tumor growth inhibition. Tissue specificity: Expressed in the developing nail bed mesenchyme.

Product:

Purified antibody in PBS with 0.05% sodium azide.

Molecular Weight:

31kDa

Swiss-Prot:

P28360

Purification&Purity:

The antibody was affinity-purified from mouse ascites by

affinity-chromatography using epitope-specific immunogen and the purity is > 95% (by SDS-PAGE).

Applications:

WB: 1/500 - 1/2000

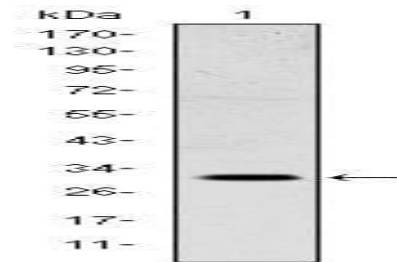
Storage&Stability:

Store at 4 °C short term. Aliquot and store at -20 °C long term. Avoid freeze-thaw cycles.

Isotype:

Mouse IgG1

DATA:



Western blot analysis using MSX1 mouse mAb against NTERA-2 cell lysate.

Note:

For research use only, not for use in diagnostic procedure.

Bioworld Technology, Inc.

Add: 1660 South Highway 100, Suite 500 St. Louis Park, MN 55416, USA.

Email: info@bioworld.com

Tel: 6123263284

Fax: 6122933841

Bioworld technology, co. Ltd.

Add: No 9, weidi road Qixia District Nanjing, 210046, P. R. China.

Email: info@biogot.com

Tel: 0086-025-68037686

Fax: 0086-025-68035151