

BECN1 monoclonal antibody

Catalog: MB21446

Host: Mouse

Reactivity: Human

BackGround:

Beclin-1 participates in the regulation of autophagy and has an important role in development, tumorigenesis, and neurodegeneration (Zhong et al., 2009 (PubMed 19270693)).(supplied by OMIM) . Tissue specificity: Ubiquitous.

Product:

Purified antibody in PBS with 0.05% sodium azide.

Molecular Weight:

60kDa

Swiss-Prot:

Q14457

Purification&Purity:

The antibody was affinity-purified from mouse ascites by affinity-chromatography using epitope-specific immunogen and the purity is > 95% (by SDS-PAGE).

Applications:

WB:1/500 - 1/2000 IHC:1/200 - 1/1000 FC:1/200 - 1/400

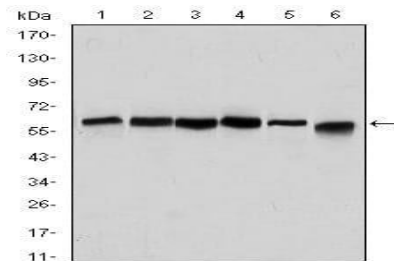
Storage&Stability:

Store at 4 °C short term. Aliquot and store at -20 °C long term. Avoid freeze-thaw cycles.

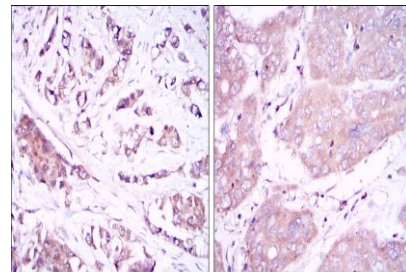
Isotype:

Mouse IgG1

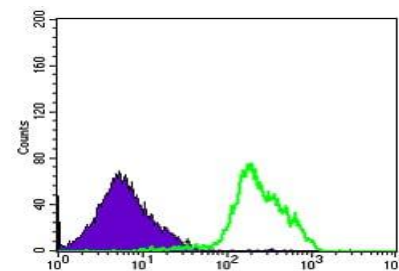
DATA:



Western blot analysis using BECN1 mouse mAb against Hela (1), A431 (2), MCF-7 (3), RAJI (4), Jurkat (5) and SKBR-3 (6) cell lysate.



Immunohistochemical analysis of paraffin-embedded human breast cancer tissues (left) and liver cancer tissues (right) using BECN1 mouse mAb with DAB staining.



Flow cytometric analysis of RAJI cells using BECN1 mouse mAb (green) and negative control (purple).

Note:

For research use only, not for use in diagnostic procedure.

Bioworld Technology, Inc.

Add: 1660 South Highway 100, Suite 500 St. Louis Park, MN 55416, USA.

Email: info@bioworld.com

Tel: 6123263284

Fax: 6122933841

Bioworld technology, co. Ltd.

Add: No 9, weidi road Qixia District Nanjing, 210046, P. R. China.

Email: info@biogot.com

Tel: 0086-025-68037686

Fax: 0086-025-68035151