

## INHA monoclonal antibody

Catalog: MB21383

Host: Mouse

Reactivity: Human, Mouse

### BackGround:

Inhibins are peptide hormones produced by the granulosa cells in female follicles and by Sertoli cells in the male seminiferous tubules. They are selectively expressed by cells of sex cord stromal derivation, and inhibit the secretion of follitropin by the pituitary gland. Inhibins are also involved in regulating diverse functions such as hypothalamic and pituitary hormone secretion, gonadal hormone secretion, germ cell development and maturation, erythroid differentiation, insulin secretion, nerve cell survival, embryonic axial development or bone growth, depending on their subunit composition. Inhibins appear to oppose the functions of activins, as inhibins and activins inhibit and activate, respectively, the secretion of follitropin by the pituitary gland. Inhibin has 2 subunits (alpha and beta) that are coded by separate genes. The alpha subunit determines whether inhibin or activin will be produced. The alpha subunit remains constant, such that the various types of inhibin are defined by the beta subunit (a,b,c,d). Inhibin A is a dimer of alpha and beta A. Inhibin B is a dimer of alpha and beta B. Proteolytic processing yields a number of inhibin alpha bioactive forms: the 20/23 kDa forms consist solely of the mature alpha chain, the 26/29 kDa forms consist of the most N terminal propeptide linked through a disulfide bond to the mature alpha chain, and the 50/53 kDa forms encompass the entire proprotein. Each type can be furthermore either mono or diglycosylated, causing the mass difference.

### Product:

Purified antibody in PBS with 0.05% sodium azide.

### Molecular Weight:

40kDa

### Swiss-Prot:

P05111

### Purification&Purity:

The antibody was affinity-purified from mouse ascites by

affinity-chromatography using epitope-specific immunogen and the purity is > 95% (by SDS-PAGE).

### Applications:

WB:1/500 - 1/2000 IF:1/200 - 1/1000

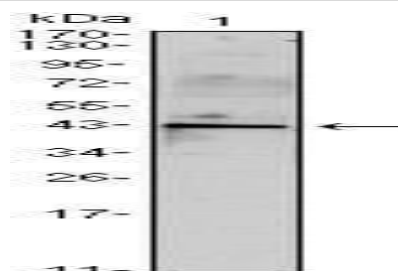
### Storage&Stability:

Store at 4 °C short term. Aliquot and store at -20 °C long term. Avoid freeze-thaw cycles.

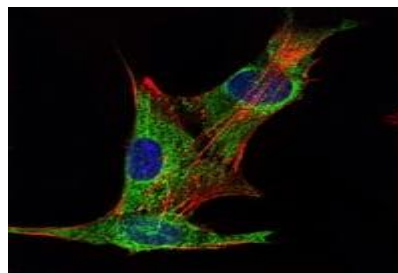
### Isotype:

Mouse IgG1

### DATA:



Western blot analysis using INHA mouse mAb against mouse spermary (1) tissues lysate.



Immunofluorescence analysis of PANC-1 cells using INHA mouse mAb (green). Blue: DRAQ5 fluorescent DNA dye. Red: Actin filaments have been labeled with Alexa Fluor-555 phalloidin.

### Note:

For research use only, not for use in diagnostic procedure.

### Bioworld Technology, Inc.

Add: 1660 South Highway 100, Suite 500 St. Louis Park, MN 55416, USA.

Email: [info@bioworld.com](mailto:info@bioworld.com)

Tel: 6123263284

Fax: 6122933841

### Bioworld technology, co. Ltd.

Add: No 9, weidi road Qixia District Nanjing, 210046, P. R. China.

Email: [info@biogot.com](mailto:info@biogot.com)

Tel: 0086-025-68037686

Fax: 0086-025-68035151



## PRODUCT DATA SHEET

Bioworld Technology, Inc.

---

---

### **Bioworld Technology, Inc.**

**Add:** 1660 South Highway 100, Suite 500 St. Louis Park,  
MN 55416, USA.

**Email:** [info@bioworld.com](mailto:info@bioworld.com)

**Tel:** 6123263284

**Fax:** 6122933841

### **Bioworld technology, co. Ltd.**

**Add:** No 9, weidi road Qixia District Nanjing, 210046,  
P. R. China.

**Email:** [info@biogot.com](mailto:info@biogot.com)

**Tel:** 0086-025-68037686

**Fax:** 0086-025-68035151