

KLHL22 monoclonal antibody

Catalog: MB21379

Host: Mouse

Reactivity: Human

BackGround:

KLHL22 (kelch-like protein 22) is a 634 amino acid protein that is related to the Drosophilakelch protein, which is required to maintain Actin organization in ovarian ring canals. Mutations affecting Kelch function result in the failure of Kelch to associate with the ring canals and subsequent female sterility. Human KLHL22 protein contains six kelch repeats and one BTB (POZ) domain. The BTB (Broad-Complex, Tramtrack and Bric a brac) domain, also known as the POZ (Poxvirus and Zinc finger) domain, is an N-terminal homodimerization domain that contains multiple copies of kelch repeats and/or C2H2-type zinc fingers. Proteins that contain BTB domains are thought to be involved in transcriptional regulation via control of chromatin structure and function. There are two isoforms of KLHL22 that are produced as a result of alternative splicing events.

Product:

Ascitic fluid containing 0.03% sodium azide.

Molecular Weight:

72kDa

Swiss-Prot:

Q53GT1

Purification&Purity:

The antibody was affinity-purified from mouse ascites by affinity-chromatography using epitope-specific immunogen and the purity is > 95% (by SDS-PAGE).

Applications:

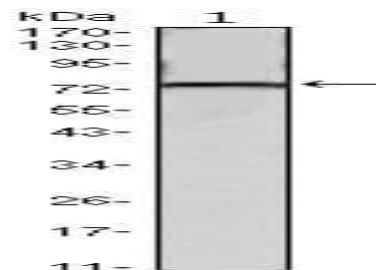
WB:1/500 - 1/2000 IF:1/200 - 1/1000

Storage&Stability:

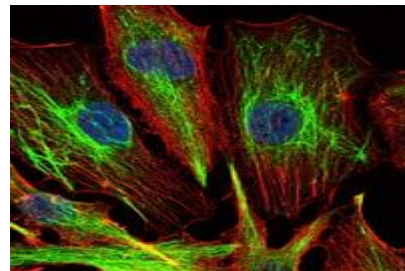
Store at 4 °C short term. Aliquot and store at -20 °C long term. Avoid freeze-thaw cycles.

Isotype:

Mouse IgG1

DATA:

Western blot analysis using KLHL22 mouse mAb against mouse brain tissues lysate.



Immunofluorescence analysis of U251 cells using KLHL22 mouse mAb (green). Blue: DRAQ5 fluorescent DNA dye. Red: Actin filaments have been labeled with Alexa Fluor-555 phalloidin.

Note:

For research use only, not for use in diagnostic procedure.

Bioworld Technology, Inc.

Add: 1660 South Highway 100, Suite 500 St. Louis Park, MN 55416, USA.

Email: info@bioworld.com

Tel: 6123263284

Fax: 6122933841

Bioworld technology, co. Ltd.

Add: No 9, weidi road Qixia District Nanjing, 210046, P. R. China.

Email: info@biogot.com

Tel: 0086-025-68037686

Fax: 0086-025-68035151