

EPO monoclonal antibody

Catalog: MB21368

Host: Mouse

Reactivity: Human

BackGround:

Human erythropoietin is member of the EPO/TPO family and encodes a secreted, glycosylated cytokine hormone composed of four alpha helical bundles. The protein is found in the plasma and regulates red cell production by promoting erythroid differentiation and initiating hemoglobin synthesis. This protein also has neuroprotective activity against a variety of potential brain injuries and antiapoptotic functions in several tissue types. It is produced by kidney or liver of adult mammals and by liver of fetal or neonatal mammals. Tissue specificity: Produced by kidney or liver of adult mammals and by liver of fetal or neonatal mammals.

Product:

Purified antibody in PBS with 0.05% sodium azide.

Molecular Weight:

21kDa

Swiss-Prot:

P01588

Purification&Purity:

The antibody was affinity-purified from mouse ascites by affinity-chromatography using epitope-specific immunogen and the purity is > 95% (by SDS-PAGE).

Applications:

WB:1/500 - 1/2000 IF:1/200 - 1/1000

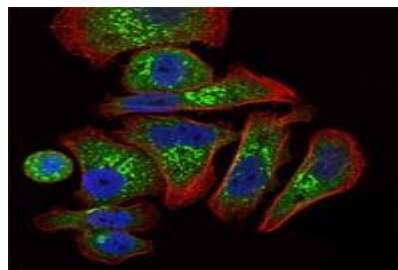
Storage&Stability:

Store at 4 °C short term. Aliquot and store at -20 °C long term. Avoid freeze-thaw cycles.

Isotype:

Mouse IgG1

DATA:



Immunofluorescence analysis of GC7901 cells using EPO mouse mAb (green). Blue: DRAQ5 fluorescent DNA dye. Red: Actin filaments have been labeled with Alexa Fluor-555 phalloidin.

Note:

For research use only, not for use in diagnostic procedure.

Bioworld Technology, Inc.

Add: 1660 South Highway 100, Suite 500 St. Louis Park, MN 55416, USA.

Email: info@bioworld.com

Tel: 6123263284

Fax: 6122933841

Bioworld technology, co. Ltd.

Add: No 9, weidi road Qixia District Nanjing, 210046, P. R. China.

Email: info@biogot.com

Tel: 0086-025-68037686

Fax: 0086-025-68035151