

KLF4 monoclonal antibody

Catalog: MB21356

Host: Mouse

Reactivity: Human

BackGround:

Kruppel-like factor 4 (gut), endothelial Kruppel-like zinc finger protein. May act as a transcriptional activator. Binds the CACCC core sequence. May be involved in the differentiation of epithelial cells and may also function in the development of the skeleton and kidney. KLF4 is highly expressed in the epithelial cells of the skin and the gastrointestinal tract.

Product:

Ascitic fluid containing 0.03% sodium azide.

Molecular Weight:

55kDa

Swiss-Prot:

O43474

Purification&Purity:

The antibody was affinity-purified from mouse ascites by affinity-chromatography using epitope-specific immunogen and the purity is > 95% (by SDS-PAGE).

Applications:

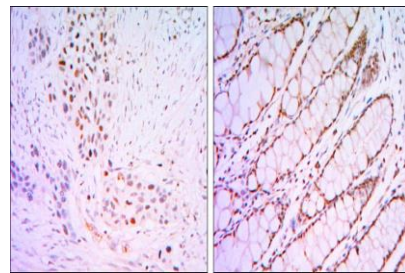
IHC: 1/200 - 1/1000

Storage&Stability:

Store at 4 °C short term. Aliquot and store at -20 °C long term. Avoid freeze-thaw cycles.

Isotype:

Mouse IgG1

DATA:

Immunohistochemical analysis of paraffin-embedded human lung cancer tissues (left) and human rectum tissues (right) using KLF4 mouse mAb with DAB staining.

Note:

For research use only, not for use in diagnostic procedure.

Bioworld Technology, Inc.

Add: 1660 South Highway 100, Suite 500 St. Louis Park, MN 55416, USA.

Email: info@bioworld.com

Tel: 6123263284

Fax: 6122933841

Bioworld technology, co. Ltd.

Add: No 9, weidi road Qixia District Nanjing, 210046, P. R. China.

Email: info@biogot.com

Tel: 0086-025-68037686

Fax: 0086-025-68035151