

## KLHL11 monoclonal antibody

Catalog: MB21344

Host: Mouse

Reactivity: Human

**BackGround:**

Kelch-like protein 11, Subcellular location Secreted.

**Product:**

Ascitic fluid containing 0.03% sodium azide.

**Molecular Weight:**

80kDa

**Swiss-Prot:**

Q9NVR0

**Purification&Purity:**

The antibody was affinity-purified from mouse ascites by affinity-chromatography using epitope-specific immunogen and the purity is > 95% (by SDS-PAGE).

**Applications:**

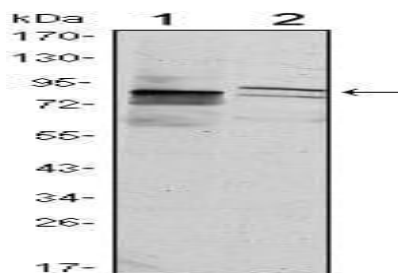
WB:1/500 - 1/2000 IF:1/200 - 1/1000 FC:1/200 - 1/400

**Storage&Stability:**

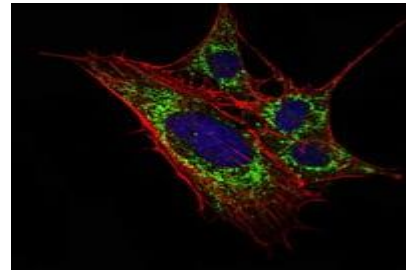
Store at 4 °C short term. Aliquot and store at -20 °C long term. Avoid freeze-thaw cycles.

**Isotype:**

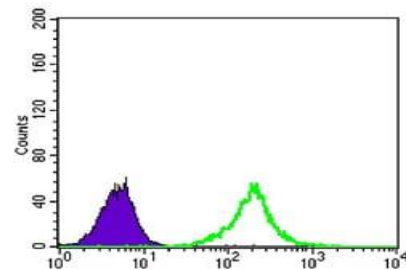
Mouse IgG1

**DATA:**

Western blot analysis using KLHL11 mouse mAb against HeLa (1) and MCF-7 (2) cell lysate.



Immunofluorescence analysis of 3T3-L1 cells using KLHL11 mouse mAb (green). Blue: DRAQ5 fluorescent DNA dye. Red: Actin filaments have been labeled with Alexa Fluor-555 phalloidin.



Flow cytometric analysis of K562 cells using KLHL11 mouse mAb (green) and negative control (purple).

**Note:**

For research use only, not for use in diagnostic procedure.

**Bioworld Technology, Inc.**

Add: 1660 South Highway 100, Suite 500 St. Louis Park, MN 55416, USA.

Email: [info@bioworld.com](mailto:info@bioworld.com)

Tel: 6123263284

Fax: 6122933841

**Bioworld technology, co. Ltd.**

Add: No 9, weidi road Qixia District Nanjing, 210046, P. R. China.

Email: [info@biogot.com](mailto:info@biogot.com)

Tel: 0086-025-68037686

Fax: 0086-025-68035151