

KLHL13 monoclonal antibody

Catalog: MB21342

Host: Mouse

Reactivity: Human

BackGround:

KLHL13 (kelch-like 13), also known as BKLHD2 (BTB and kelch domain-containing protein 2), is a 604 amino acid protein that contains six Kelch repeats and one BTB/POZ domain. Expressed predominantly in brain, KLHL13 is believed to play a role in protein ubiquitination and may function as a substrate-specific adapter of an E3 ubiquitin-protein ligase complex. E3 ligases accept a ubiquitin residue from an E2 ubiquitin-conjugating enzyme and immediately transfer that residue to a protein that is targeted for degradation. Specifically, KLHL13 interacts with KLHL9 and CUL-3, a member of the cullin family of mediators that participate in the selective targeting of proteins for ubiquitin-mediated proteolysis. Via its BTB and C-terminal Kelch (BACK) motif, KLHL13 is thought to play a role in spatially orientating substrates in the CUL-3 ligase.

Product:

Ascitic fluid containing 0.03% sodium azide.

Molecular Weight:

74kDa

Swiss-Prot:

Q9P2N7

Purification&Purity:

The antibody was affinity-purified from mouse ascites by affinity-chromatography using epitope-specific immunogen and the purity is > 95% (by SDS-PAGE).

Applications:

WB:1/500 - 1/2000 IHC:1/200 - 1/1000 IF:1/200 - 1/1000
FC:1/200 - 1/400

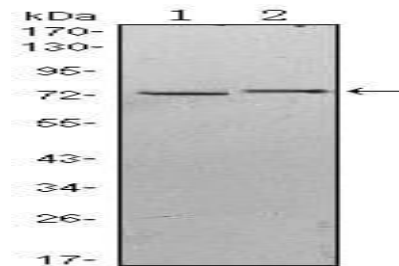
Storage&Stability:

Store at 4 °C short term. Aliquot and store at -20 °C long term. Avoid freeze-thaw cycles.

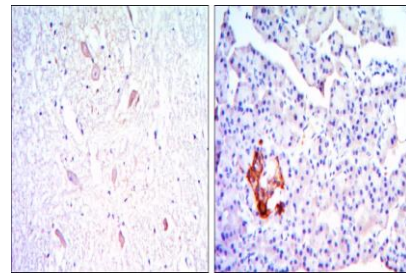
Isotype:

Mouse IgG1

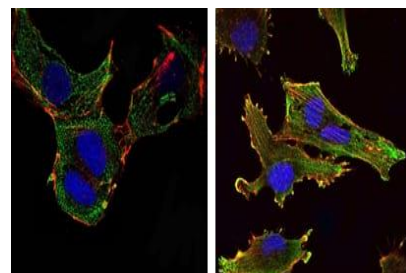
DATA:



Western blot analysis using KLHL13 mouse mAb against HeLa (1) and MCF-7 (2) cell lysate.



Immunohistochemical analysis of paraffin-embedded human brain tissues (left) and pancreas tissues (right) using KLHL13 mouse mAb with DAB staining.



Immunofluorescence analysis of NTERA-2 cells (left) and U251 (right) cells using KLHL13 mouse mAb (green). Blue: DRAQ5 fluorescent DNA dye. Red: Actin filaments have been labeled with Alexa Fluor-555 phalloidin.

Bioworld Technology, Inc.

Add: 1660 South Highway 100, Suite 500 St. Louis Park, MN 55416, USA.

Email: info@bioworld.com

Tel: 6123263284

Fax: 6122933841

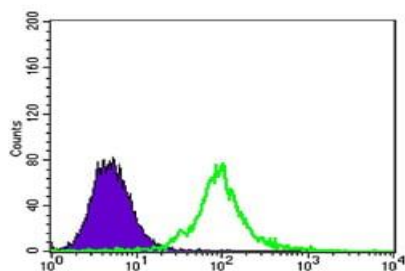
Bioworld technology, co. Ltd.

Add: No 9, weidi road Qixia District Nanjing, 210046, P. R. China.

Email: info@biogot.com

Tel: 0086-025-68037686

Fax: 0086-025-68035151



Flow cytometric analysis of 3T3/L1 cells using KLHL13 mouse mAb (green) and negative control (purple).

Note:

For research use only, not for use in diagnostic procedure.

Bioworld Technology, Inc.

Add: 1660 South Highway 100, Suite 500 St. Louis Park, MN 55416, USA.

Email: info@bioworld.com

Tel: 6123263284

Fax: 6122933841

Bioworld technology, co. Ltd.

Add: No 9, weidi road Qixia District Nanjing, 210046, P. R. China.

Email: info@biogot.com

Tel: 0086-025-68037686

Fax: 0086-025-68035151