

## CDC27 monoclonal antibody

Catalog: MB21340

Host: Mouse

Reactivity: Human

**BackGround:**

Cdc27 shares strong similarity with *Saccharomyces cerevisiae* protein Cdc27, and the gene product of *Schizosaccharomyces pombe* nuc 2. It is a component of the Anaphase Promoting Complex (APC), which is composed of eight protein subunits and is highly conserved in eucaryotic cells. The APC catalyzes the formation of the cyclin B ubiquitin conjugate that is responsible for the ubiquitin mediated proteolysis of B type cyclins. This protein and 3 other members of the APC complex contain the TPR (tetrapeptide repeat), a protein domain important for protein protein interaction. This protein was shown to interact with mitotic checkpoint proteins including Mad2, p55CDC and BUBR1, and thus may be involved in controlling the timing of mitosis.

**Product:**

Ascitic fluid containing 0.03% sodium azide.

**Molecular Weight:**

91kDa

**Swiss-Prot:**

P30260

**Purification&Purity:**

The antibody was affinity-purified from mouse ascites by affinity-chromatography using epitope-specific immunogen and the purity is > 95% (by SDS-PAGE).

**Applications:**

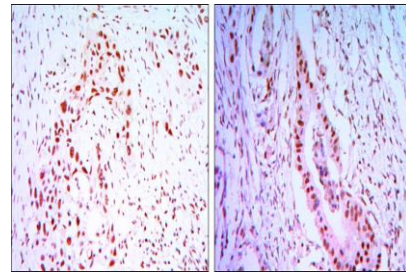
IHC:1/200 - 1/1000

**Storage&Stability:**

Store at 4 °C short term. Aliquot and store at -20 °C long term. Avoid freeze-thaw cycles.

**Isotype:**

Mouse IgG1

**DATA:**

Immunohistochemical analysis of paraffin-embedded human lung cancer tissues (left) and colon cancer tissues (right) using CDC27 mouse mAb with DAB staining.

**Note:**

For research use only, not for use in diagnostic procedure.

**Bioworld Technology, Inc.**

Add: 1660 South Highway 100, Suite 500 St. Louis Park, MN 55416, USA.

Email: [info@bioworld.com](mailto:info@bioworld.com)

Tel: 6123263284

Fax: 6122933841

**Bioworld technology, co. Ltd.**

Add: No 9, weidi road Qixia District Nanjing, 210046, P. R. China.

Email: [info@biogot.com](mailto:info@biogot.com)

Tel: 0086-025-68037686

Fax: 0086-025-68035151