

VCAM1 monoclonal antibody

Catalog: MB21328

Host: Mouse

Reactivity: Human

BackGround:

This gene is a member of the Ig superfamily and encodes a cell surface sialoglycoprotein expressed by cytokine-activated endothelium. This type I membrane protein mediates leukocyte-endothelial cell adhesion and signal transduction, and may play a role in the development of atherosclerosis and rheumatoid arthritis. Two alternatively spliced transcripts encoding different isoforms have been described for this gene. Tissue specificity: Expressed on inflamed vascular endothelium, as well as on macrophage-like and dendritic cell types in both normal and inflamed tissue. INVITROGEN: CD106 is expressed on bone marrow stromal cells, myeloid cells, and endothelial cells.

Product:

Purified antibody in PBS with 0.05% sodium azide.

Molecular Weight:

81kDa

Swiss-Prot:

P19320

Purification&Purity:

The antibody was affinity-purified from mouse ascites by affinity-chromatography using epitope-specific immunogen and the purity is > 95% (by SDS-PAGE).

Applications:

WB:1/500 - 1/2000 IHC:1/200 - 1/1000

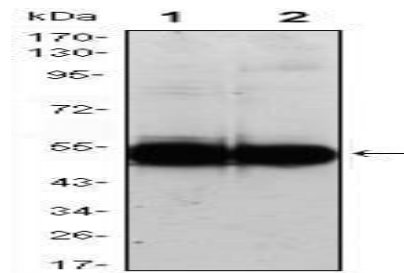
Storage&Stability:

Store at 4 °C short term. Aliquot and store at -20 °C long term. Avoid freeze-thaw cycles.

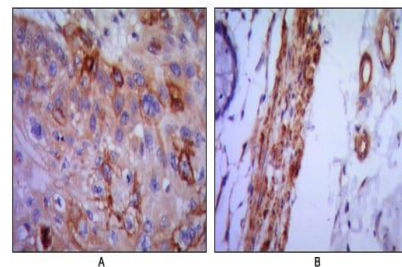
Isotype:

Mouse IgG1

DATA:



Western blot analysis using VCAM1 mouse mAb against HUVEC (1) and EC (2) cell lysate.



Immunohistochemical analysis of paraffin-embedded human lung cancer (A) and colon cancer (B) using VCAM1 mouse mAb with DAB staining.

Note:

For research use only, not for use in diagnostic procedure.

Bioworld Technology, Inc.

Add: 1660 South Highway 100, Suite 500 St. Louis Park, MN 55416, USA.

Email: info@bioworld.com

Tel: 6123263284

Fax: 6122933841

Bioworld technology, co. Ltd.

Add: No 9, weidi road Qixia District Nanjing, 210046, P. R. China.

Email: info@biogot.com

Tel: 0086-025-68037686

Fax: 0086-025-68035151