

CDH2 monoclonal antibody

Catalog: MB21327

Host: Mouse

Reactivity: Human, Mouse, Rat, Rabbit, Monkey

Background:

This gene is a classical cadherin from the cadherin superfamily. The encoded protein is a calcium dependent cell-cell adhesion glycoprotein comprised of five extracellular cadherin repeats, a transmembrane region and a highly conserved cytoplasmic tail. The protein functions during gastrulation and is required for establishment of left-right asymmetry. At certain central nervous system synapses, presynaptic to postsynaptic adhesion is mediated at least in part by this gene product.

Product:

Purified antibody in PBS with 0.05% sodium azide.

Molecular Weight:

99.8kDa

Swiss-Prot:

P19022

Purification&Purity:

The antibody was affinity-purified from mouse ascites by affinity-chromatography using epitope-specific immunogen and the purity is > 95% (by SDS-PAGE).

Applications:

WB:1/500 - 1/2000 IHC:1/200 - 1/1000 IF:1/200 - 1/1000
FC:1/200 - 1/400

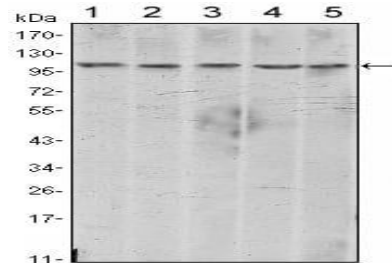
Storage&Stability:

Store at 4 °C short term. Aliquot and store at -20 °C long term. Avoid freeze-thaw cycles.

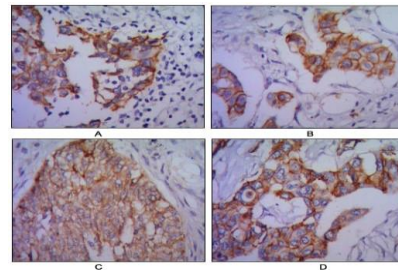
Isotype:

Mouse IgG1

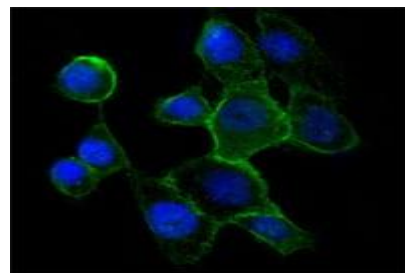
DATA:



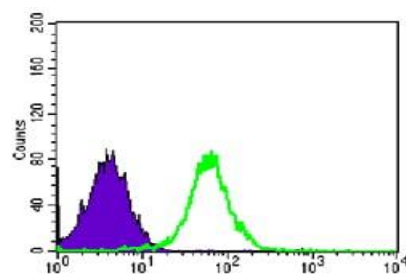
Western blot analysis using CDH2 mouse mAb against A431 (1), NIH/3T3 (2), HeLa (3), C6 (4) and LNCap (5) cell lysate.



Immunohistochemical analysis of paraffin-embedded human lung cancer (A), colon cancer (B), ovarian cancer (C) and mammary cancer (D), using CDH2 mouse mAb with DAB staining.



Immunofluorescence analysis of A431 cells using CDH2 mouse mAb (green). Blue: DRAQ5 fluorescent DNA dye.



Flow cytometric analysis of PC-2 cells using CDH2 mouse mAb (green)

Bioworld Technology, Inc.

Add: 1660 South Highway 100, Suite 500 St. Louis Park, MN 55416, USA.

Email: info@bioworld.com

Tel: 6123263284

Fax: 6122933841

Bioworld technology, co. Ltd.

Add: No 9, weidi road Qixia District Nanjing, 210046, P. R. China.

Email: info@biogot.com

Tel: 0086-025-68037686

Fax: 0086-025-68035151



PRODUCT DATA SHEET

Bioworld Technology, Inc.

and negative control (purple).

For research use only, not for use in diagnostic procedure.

Note:

Bioworld Technology, Inc.

Add: 1660 South Highway 100, Suite 500 St. Louis Park,
MN 55416, USA.

Email: info@bioworld.com

Tel: 6123263284

Fax: 6122933841

Bioworld technology, co. Ltd.

Add: No 9, weidi road Qixia District Nanjing, 210046,
P. R. China.

Email: info@biogot.com

Tel: 0086-025-68037686

Fax: 0086-025-68035151