

SYP monoclonal antibody

Catalog: MB21319

Host: Mouse

Reactivity: Human,Rat

BackGround:

Synaptophysin (p38) is an integral membrane protein of small synaptic vesicles in brain and endocrine cells. Synaptophysin contains four transmembrane domains that form a hexameric channel or gap junction-like pore. Synaptophysin binds to the SNARE protein synaptobrevin/VAMP, which prevents the inclusion of synaptobrevin in the synaptic vesicle fusion complex and creates a pool of synaptobrevin for exocytosis when synapse activity increases. Synaptophysin is also responsible for targeting synaptobrevin 2/VAMP2 to synaptic vesicles, a critical component of the fusion complex.

Product:

Purified antibody in PBS with 0.05% sodium azide.

Molecular Weight:

33.8kDa

Swiss-Prot:

P08247

Purification&Purity:

The antibody was affinity-purified from mouse ascites by affinity-chromatography using epitope-specific immunogen and the purity is > 95% (by SDS-PAGE).

Applications:

WB:1/500 - 1/2000 IHC:1/200 - 1/1000

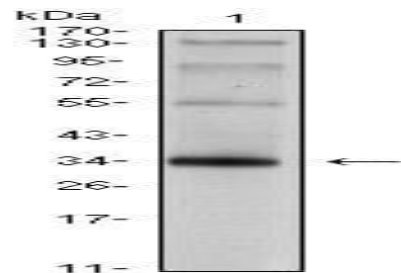
Storage&Stability:

Store at 4 °C short term. Aliquot and store at -20 °C long term. Avoid freeze-thaw cycles.

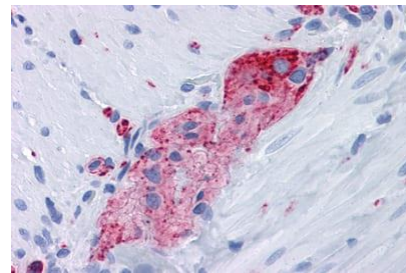
Isotype:

Mouse IgG1

DATA:



Western blot analysis using SYP mouse mAb against rat brain tissue lysate.



Immunohistochemical analysis of paraffin-embedded human Small Intestine, myenteric plexus tissues using anti-SYP mouse mAb

Note:

For research use only, not for use in diagnostic procedure.

Bioworld Technology, Inc.

Add: 1660 South Highway 100, Suite 500 St. Louis Park, MN 55416, USA.

Email: info@bioworld.com

Tel: 6123263284

Fax: 6122933841

Bioworld technology, co. Ltd.

Add: No 9, weidi road Qixia District Nanjing, 210046, P. R. China.

Email: info@biogot.com

Tel: 0086-025-68037686

Fax: 0086-025-68035151