

CDC25C monoclonal antibody

Catalog: MB21314

Host: Mouse

Reactivity: Human

BackGround:

Cdc25C is a tyrosine phosphatase and belongs to the Cdc25 phosphatase family. It has been highly conserved during evolution and it plays a key role in the regulation of cell division. It directs dephosphorylation of cyclin B-bound CDC2 and triggers entry into mitosis. It is also thought to suppress p53-induced growth arrest. Cdc25C is mainly expressed in G2 phase. Multiple alternatively spliced transcript variants of this gene have been described, however, the full-length nature of many of them is not known.

Product:

Purified antibody in PBS with 0.05% sodium azide.

Molecular Weight:

58kDa

Swiss-Prot:

P30307

Purification&Purity:

The antibody was affinity-purified from mouse ascites by affinity-chromatography using epitope-specific immunogen and the purity is > 95% (by SDS-PAGE).

Applications:

WB:1/500 - 1/2000 IHC:1/200 - 1/1000

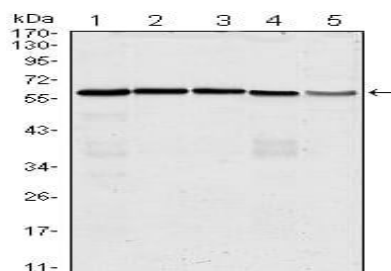
Storage&Stability:

Store at 4 °C short term. Aliquot and store at -20 °C long term. Avoid freeze-thaw cycles.

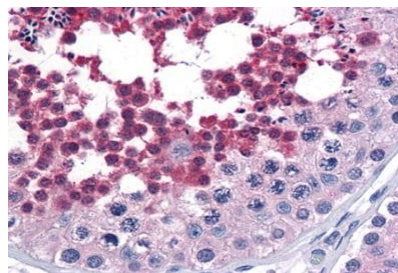
Isotype:

Mouse IgG1

DATA:



Western blot analysis using anti-CDC25C mAb against Hela (1), K562 (2), PC-3 (3), HEK293 (4) and Raw264.7 (5) cell lysate.



Immunohistochemical analysis of paraffin-embedded human Testis tissues using anti-CDC25C mouse mAb

Note:

For research use only, not for use in diagnostic procedure.

Bioworld Technology, Inc.

Add: 1660 South Highway 100, Suite 500 St. Louis Park, MN 55416, USA.

Email: info@bioworld.com

Tel: 6123263284

Fax: 6122933841

Bioworld technology, co. Ltd.

Add: No 9, weidi road Qixia District Nanjing, 210046, P. R. China.

Email: info@biogot.com

Tel: 0086-025-68037686

Fax: 0086-025-68035151