

PARP monoclonal antibody

Catalog: MB21308

Host: Mouse

Reactivity: Human

BackGround:

This gene encodes a chromatin-associated enzyme, poly(ADP-ribose)transferase, which modifies various nuclear proteins by poly(ADP-ribose)ation. The modification is dependent on DNA and is involved in the regulation of various important cellular processes such as differentiation, proliferation, and tumor transformation and also in the regulation of the molecular events involved in the recovery of cell from DNA damage. In addition, this enzyme may be the site of mutation in Fanconi anemia, and may participate in the pathophysiology of type I diabetes.

Product:

Purified antibody in PBS with 0.05% sodium azide.

Molecular Weight:

117kDa

Swiss-Prot:

P09874

Purification&Purity:

The antibody was affinity-purified from mouse ascites by affinity-chromatography using epitope-specific immunogen and the purity is > 95% (by SDS-PAGE).

Applications:

WB:1/500 - 1/2000 FC:1/200 - 1/400

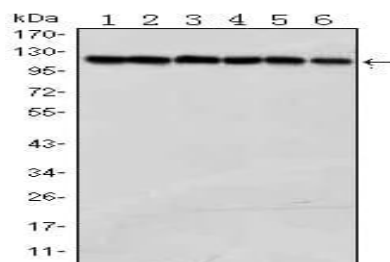
Storage&Stability:

Store at 4 °C short term. Aliquot and store at -20 °C long term. Avoid freeze-thaw cycles.

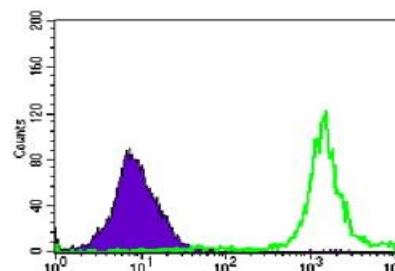
Isotype:

Mouse IgG1

DATA:



Western blot analysis using PARP mouse mAb against Jurkat (1), K562 (2), HeLa (3), Raji (4), THP-1 (5) and SW620 (6) cell lysate.



Flow cytometric analysis of Jurkat cells using anti-PARP mAb (green) and negative control (purple).

Note:

For research use only, not for use in diagnostic procedure.

Bioworld Technology, Inc.

Add: 1660 South Highway 100, Suite 500 St. Louis Park, MN 55416, USA.

Email: info@bioworld.com

Tel: 6123263284

Fax: 6122933841

Bioworld technology, co. Ltd.

Add: No 9, weidi road Qixia District Nanjing, 210046, P. R. China.

Email: info@biogot.com

Tel: 0086-025-68037686

Fax: 0086-025-68035151