

## CER1 monoclonal antibody

Catalog: MB21259

Host: Mouse

Reactivity: Human

**BackGround:**

CER1: cerberus 1, cysteine knot superfamily, homolog (*Xenopus laevis*). It is a cytokine member of the cysteine knot superfamily, characterized by nine conserved cysteines and a cysteine knot region. The cerberus-related cytokines, together with Dan and DRM/Gremlin, represent a group of bone morphogenetic protein (BMP) antagonists that can bind directly to BMPs and inhibit their activity.

**Product:**

Ascitic fluid containing 0.03% sodium azide.

**Molecular Weight:**

30kDa

**Swiss-Prot:**

O95813

**Purification&Purity:**

The antibody was affinity-purified from mouse ascites by affinity-chromatography using epitope-specific immunogen and the purity is > 95% (by SDS-PAGE).

**Applications:**

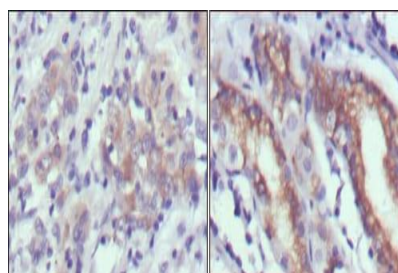
IHC:1/200 - 1/1000

**Storage&Stability:**

Store at 4 °C short term. Aliquot and store at -20 °C long term. Avoid freeze-thaw cycles.

**Isotype:**

Mouse IgG1

**DATA:**

Immunohistochemical analysis of paraffin-embedded human gastric cancer (left) and normal gastric tissues (right) using CER1 mouse mAb with DAB staining.

**Note:**

For research use only, not for use in diagnostic procedure.

**Bioworld Technology, Inc.**

Add: 1660 South Highway 100, Suite 500 St. Louis Park, MN 55416, USA.

Email: [info@bioworld.com](mailto:info@bioworld.com)

Tel: 6123263284

Fax: 6122933841

**Bioworld technology, co. Ltd.**

Add: No 9, weidi road Qixia District Nanjing, 210046, P. R. China.

Email: [info@biogot.com](mailto:info@biogot.com)

Tel: 0086-025-68037686

Fax: 0086-025-68035151