

## LCN1 monoclonal antibody

Catalog: MB21211

Host: Mouse

Reactivity: Human

### BackGround:

LCN1: lipocalin 1 (tear prealbumin), also known as TP, PMFA, VEGP. Entrez Protein: NP\_002288. The protein belongs to the lipocalin family. Lipocalins are a group of extracellular proteins that are able to bind lipophiles by enclosure within their structures to minimize solvent contact. This protein may bind hydrophobic ligands and inhibit cysteine proteinases. It may also play a role in taste reception and could be necessary for the concentration and delivery of sapid molecules in the gustatory system.

### Product:

Ascitic fluid containing 0.03% sodium azide.

### Molecular Weight:

19.2kDa

### Swiss-Prot:

P31025

### Purification&Purity:

The antibody was affinity-purified from mouse ascites by affinity-chromatography using epitope-specific immunogen and the purity is > 95% (by SDS-PAGE).

### Applications:

IHC:1/200 - 1/1000 IF:1/200 - 1/1000

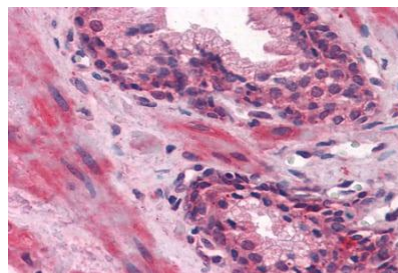
### Storage&Stability:

Store at 4 °C short term. Aliquot and store at -20 °C long term. Avoid freeze-thaw cycles.

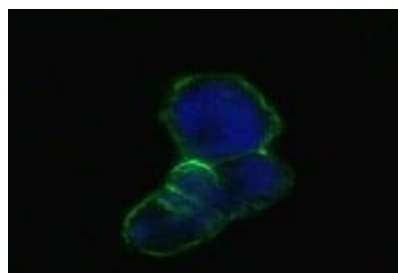
### Isotype:

Mouse IgG1

### DATA:



Immunohistochemical analysis of paraffin-embedded human Prostate tissues using LCN1 mouse mAb



Confocal Immunofluorescence analysis of methanol-fixed HEK293 cells transfected with LCN1-hIgGfc using LCN1 mouse mAb (green), showing membrane localization. Blue: DRAQ5 fluorescent DNA dye.

### Note:

For research use only, not for use in diagnostic procedure.

### Bioworld Technology, Inc.

Add: 1660 South Highway 100, Suite 500 St. Louis Park, MN 55416, USA.

Email: [info@bioworld.com](mailto:info@bioworld.com)

Tel: 6123263284

Fax: 6122933841

### Bioworld technology, co. Ltd.

Add: No 9, weidi road Qixia District Nanjing, 210046, P. R. China.

Email: [info@biogot.com](mailto:info@biogot.com)

Tel: 0086-025-68037686

Fax: 0086-025-68035151