

MYL2 monoclonal antibody

Catalog: MB21207

Host: Mouse

Reactivity: Human

BackGround:

MYL2(myosin, light chain 2, regulatory, cardiac, slow), also known as MLC-2, MLC2v. Entrez protein NP_000423. MYL2 associated with cardiac myosin beta (or slow) heavy chain. Ca⁺ triggers the phosphorylation of regulatory light chain that in turn triggers contraction. It is an hexamer of two heavy chains and four light chains that is predominantly expressed in adult cardiac ventricle muscle. Mutations in MYL2 are associated with mid-left ventricular chamber type hypertrophic cardiomyopathy.

Product:

Ascitic fluid containing 0.03% sodium azide.

Molecular Weight:

19kDa

Swiss-Prot:

P10916

Purification&Purity:

The antibody was affinity-purified from mouse ascites by affinity-chromatography using epitope-specific immunogen and the purity is > 95% (by SDS-PAGE).

Applications:

WB:1/500 - 1/2000

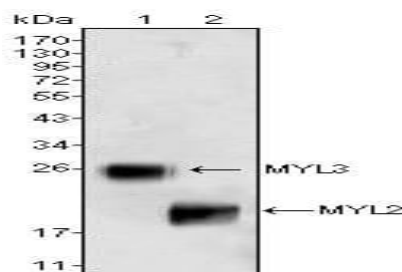
Storage&Stability:

Store at 4 °C short term. Aliquot and store at -20 °C long term. Avoid freeze-thaw cycles.

Isotype:

Mouse IgG1

DATA:



Western blot analysis using MYL3 (1) and MYL2 (2) mouse mAb against rat fetal heart tissue lysate.

Note:

For research use only, not for use in diagnostic procedure.

Bioworld Technology, Inc.

Add: 1660 South Highway 100, Suite 500 St. Louis Park, MN 55416, USA.

Email: info@bioworld.com

Tel: 6123263284

Fax: 6122933841

Bioworld technology, co. Ltd.

Add: No 9, weidi road Qixia District Nanjing, 210046, P. R. China.

Email: info@biogot.com

Tel: 0086-025-68037686

Fax: 0086-025-68035151