

KLF15 monoclonal antibody

Catalog: MB21202

Host: Mouse

Reactivity: Human

Background:

KLF15 (Krueppel-like factor 15), also known as KKL15, DKFZp779M1320. Entrez Protein NP_054798. Sequence analysis predicted that the 416 amino acid KLF15 protein, which is 84% identical to the rat Klf15 protein, contains 3 zinc finger motifs at its C terminus, N-terminal serine-rich stretches, and a central proline-rich segment. KLF15, a kidney-enriched Krueppel-like factor, is a transcriptional activator that binds the CLCNKA promoter. KLF15, which is a nuclear protein, is expressed primarily in liver, heart, skeletal muscle and kidney tissues but is not detected in lymphoid tissues or bone marrow. KLF15 is an important regulator of GLUT4 in both adipose and muscle tissues.

Product:

Purified antibody in PBS with 0.05% sodium azide.

Molecular Weight:

44kDa

Swiss-Prot:

Q9UIH9

Purification&Purity:

The antibody was affinity-purified from mouse ascites by affinity-chromatography using epitope-specific immuno-

gen and the purity is > 95% (by SDS-PAGE).

Applications:

WB:1/500 - 1/2000

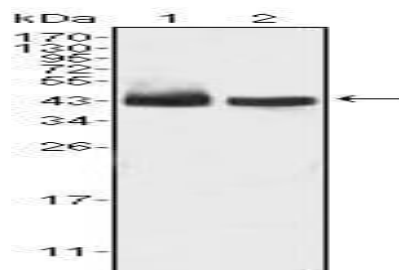
Storage&Stability:

Store at 4 °C short term. Aliquot and store at -20 °C long term. Avoid freeze-thaw cycles.

Isotype:

Mouse IgG1

DATA:



Western blot analysis using KLF15 mouse mAb against HepG2 (1) and SMMC-7721 (2) cell lysate.

Note:

For research use only, not for use in diagnostic procedure.

Bioworld Technology, Inc.

Add: 1660 South Highway 100, Suite 500 St. Louis Park, MN 55416, USA.

Email: info@bioworld.com

Tel: 6123263284

Fax: 6122933841

Bioworld technology, co. Ltd.

Add: No 9, weidi road Qixia District Nanjing, 210046, P. R. China.

Email: info@biogot.com

Tel: 0086-025-68037686

Fax: 0086-025-68035151