

## APOL1 monoclonal antibody

Catalog: MB21199

Host: Mouse

Reactivity: Human

### BackGround:

APOL1 (apolipoprotein L, 1), also known as APOL, APO-L, APOL-I. Entrez Protein NP\_001130012. It is a 395aa secreted high density lipoprotein which binds to apolipoprotein A-I. And is involved in the formation of most cholesteryl esters in plasma and also promotes efflux of cholesterol from cells. The apolipoprotein L gene family encodes six highly homologous proteins designated apoL-I to -VI. This apolipoprotein L family member may play a role in lipid exchange and transport throughout the body, as well as in reverse cholesterol transport from peripheral cells to the liver. Several different transcript variants encoding different isoforms have been found for this gene.

### Product:

Ascitic fluid containing 0.03% sodium azide.

### Molecular Weight:

44kDa

### Swiss-Prot:

O14791

### Purification&Purity:

The antibody was affinity-purified from mouse ascites by affinity-chromatography using epitope-specific immuno-

gen and the purity is > 95% (by SDS-PAGE).

### Applications:

WB: 1/500 - 1/2000

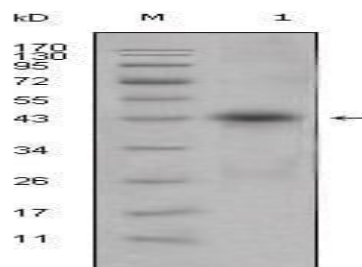
### Storage&Stability:

Store at 4 °C short term. Aliquot and store at -20 °C long term. Avoid freeze-thaw cycles.

### Isotype:

Mouse IgG1

### DATA:



Western blot analysis using APOL1 mouse mAb against human plasma (1).

### Note:

For research use only, not for use in diagnostic procedure.

### Bioworld Technology, Inc.

Add: 1660 South Highway 100, Suite 500 St. Louis Park, MN 55416, USA.

Email: [info@bioworld.com](mailto:info@bioworld.com)

Tel: 6123263284

Fax: 6122933841

### Bioworld technology, co. Ltd.

Add: No 9, weidi road Qixia District Nanjing, 210046, P. R. China.

Email: [info@biogot.com](mailto:info@biogot.com)

Tel: 0086-025-68037686

Fax: 0086-025-68035151