

LPA monoclonal antibody

Catalog: MB21192

Host: Mouse

Reactivity: Human

BackGround:

LPA: lipoprotein, Lp(a). Apo(a) is the main constituent of lipoprotein(a) (lp(a)). It has serine proteinase activity and is able of autoprolysis. Inhibits tissue-type plasminogen activator 1.Lp(a) may be a ligand for megalin/gp 330.Apo(a) is known to be proteolytically cleaved, leading to the formation of the so-called mini-lp(a).Apo(a) fragments accumulate in atherosclerotic lesions, where they may promote thrombogenesis.O-glycosylation may limit the extent of proteolytic fragmentation.

Product:

Purified antibody in PBS with 0.05% sodium azide.

Molecular Weight:

Swiss-Prot:

P08519

Purification&Purity:

The antibody was affinity-purified from mouse ascites by affinity-chromatography using epitope-specific immunogen and the purity is > 95% (by SDS-PAGE).

Applications:

IHC:1/200 - 1/1000

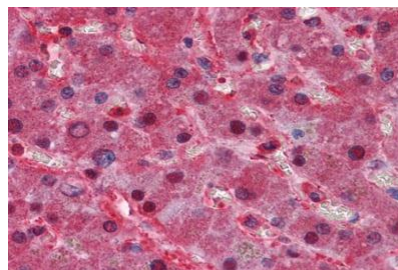
Storage&Stability:

Store at 4 °C short term. Aliquot and store at -20 °C long term. Avoid freeze-thaw cycles.

Isotype:

Mouse IgG1

DATA:



Immunohistochemical analysis of paraffin-embedded human Liver tissues using LPA mouse mAb

Note:

For research use only, not for use in diagnostic procedure.

Bioworld Technology, Inc.

Add: 1660 South Highway 100, Suite 500 St. Louis Park, MN 55416, USA.

Email: info@bioworld.com

Tel: 6123263284

Fax: 6122933841

Bioworld technology, co. Ltd.

Add: No 9, weidi road Qixia District Nanjing, 210046, P. R. China.

Email: info@biogot.com

Tel: 0086-025-68037686

Fax: 0086-025-68035151