

## Cytokeratin 18 monoclonal antibody

Catalog: MB21183

Host: Mouse

Reactivity: Human

### BackGround:

Cytokeratin 18, also known as CK18, CYK18, KRT18. Entrez Protein NP\_000215. It encodes the type I intermediate filament chain keratin 18. Keratin 18, together with its filament partner keratin 8, are perhaps the most commonly found members of the intermediate filament gene family. They are expressed in single layer epithelial tissues of the body. Mutations in this gene have been linked to cryptogenic cirrhosis. Two transcript variants encoding the same protein have been found for this gene.

### Product:

Purified antibody in PBS with 0.05% sodium azide.

### Molecular Weight:

48kDa

### Swiss-Prot:

P05783

### Purification&Purity:

The antibody was affinity-purified from mouse ascites by affinity-chromatography using epitope-specific immunogen and the purity is > 95% (by SDS-PAGE).

### Applications:

WB:1/500 - 1/2000 IHC:1/200 - 1/1000

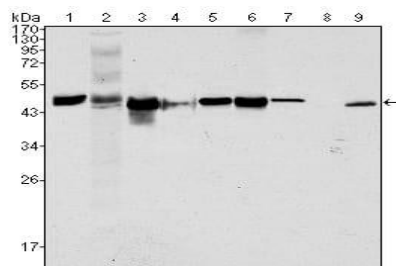
### Storage&Stability:

Store at 4 °C short term. Aliquot and store at -20 °C long term. Avoid freeze-thaw cycles.

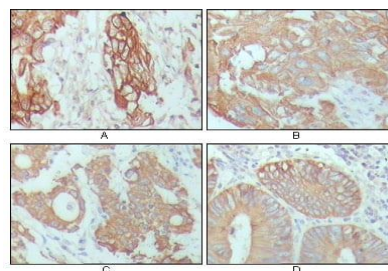
### Isotype:

Mouse IgG2b

### DATA:



Western blot analysis using CK18 mouse mAb against Hela (1), NIH/3T3 (2), A549 (3), Jurkat (4), MCF-7(5), HepG2 (6), A431 (7), HEK293 (8) and K562 (9) cell lysate.



Immunohistochemical analysis of paraffin-embedded human breast carcinoma (A), hepatocarcinoma (B), stomach cancer (C) and colon cancer tissue (D), showing cytoplasmic location with DAB staining using CK18 mouse mAb.

### Note:

For research use only, not for use in diagnostic procedure.

### Bioworld Technology, Inc.

Add: 1660 South Highway 100, Suite 500 St. Louis Park, MN 55416, USA.

Email: [info@bioworld.com](mailto:info@bioworld.com)

Tel: 6123263284

Fax: 6122933841

### Bioworld technology, co. Ltd.

Add: No 9, weidi road Qixia District Nanjing, 210046, P. R. China.

Email: [info@biogot.com](mailto:info@biogot.com)

Tel: 0086-025-68037686

Fax: 0086-025-68035151