

LIN28 monoclonal antibody

Catalog: MB21181

Host: Mouse

Reactivity: Human

BackGround:

LIN28: lin-28 homolog (*C. elegans*), also known as CSDD1, ZCCHC1. Entrez Protein NP_078950. LIN28 was first discovered in the nematode *C. elegans*. It is a heterochronic protein in *C. elegans* involved in the timing of developmental events and choice of stage specific cell fates. LIN28 expression has been found to be regulated post-transcriptionally by miRNAs in both nematodes and mammals. In humans it is expressed in embryonic stem cells and its expression decreases during differentiation. It is negatively regulated by retinoic acid in neuronal differentiation.

Product:

Ascitic fluid containing 0.03% sodium azide.

Molecular Weight:

23kDa

Swiss-Prot:

Q9H9Z2

Purification&Purity:

The antibody was affinity-purified from mouse ascites by affinity-chromatography using epitope-specific immunogen and the purity is > 95% (by SDS-PAGE).

Applications:

IF: 1/200 - 1/1000

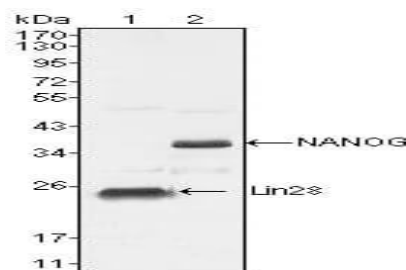
Storage&Stability:

Store at 4 °C short term. Aliquot and store at -20 °C long term. Avoid freeze-thaw cycles.

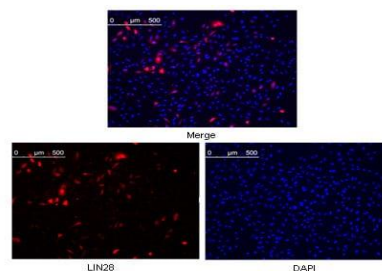
Isotype:

Mouse IgG1

DATA:



Western blot analysis using LIN28 mouse mAb against NTERA-2 cell lysate (1).



Confocal Immunofluorescence analysis of methanol fixed HeLa cells were transfected with pMX construct of human LIN28, cells were analyzed ~62 hours after transfection.

Note:

For research use only, not for use in diagnostic procedure.

Bioworld Technology, Inc.

Add: 1660 South Highway 100, Suite 500 St. Louis Park, MN 55416, USA.

Email: info@bioworld.com

Tel: 6123263284

Fax: 6122933841

Bioworld technology, co. Ltd.

Add: No 9, weidi road Qixia District Nanjing, 210046, P. R. China.

Email: info@biogot.com

Tel: 0086-025-68037686

Fax: 0086-025-68035151