

ALCAM monoclonal antibody

Catalog: MB21167

Host: Mouse

Reactivity: Human

BackGround:

ALCAM(CD166): Activated leukocyte cell adhesion molecule. CD166 is a member of the Ig superfamily and is expressed on activated T-cells, B cells and other cells including thymic epithelial cells, fibroblasts, keratinocytes and neurons. CD6 has been identified as a receptor for CD166.

Product:

Ascitic fluid containing 0.03% sodium azide.

Molecular Weight:

Swiss-Prot:

Q13740

Purification&Purity:

The antibody was affinity-purified from mouse ascites by affinity-chromatography using epitope-specific immunogen and the purity is > 95% (by SDS-PAGE).

Applications:

IHC: 1/200 - 1/1000

Storage&Stability:

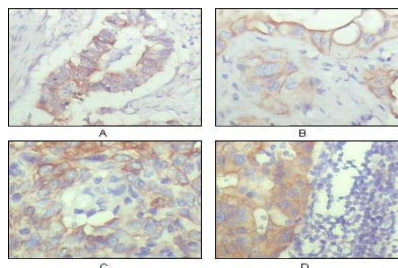
Store at 4 °C short term. Aliquot and store at -20 °C long

term. Avoid freeze-thaw cycles.

Isotype:

Mouse IgG1

DATA:



Immunohistochemical analysis of paraffin-embedded human ovary carcinoma (A), kidney carcinoma (B), lung carcinoma (C) and breast carcinoma (D), showing cytoplasmic and membrane localization with DAB staining using ALCAM mouse mAb.

Note:

For research use only, not for use in diagnostic procedure.

Bioworld Technology, Inc.

Add: 1660 South Highway 100, Suite 500 St. Louis Park, MN 55416, USA.

Email: info@bioworld.com

Tel: 6123263284

Fax: 6122933841

Bioworld technology, co. Ltd.

Add: No 9, weidi road Qixia District Nanjing, 210046, P. R. China.

Email: info@biogot.com

Tel: 0086-025-68037686

Fax: 0086-025-68035151