

## IGFBP2 monoclonal antibody

Catalog: MB21154

Host: Mouse

Reactivity: Human

**BackGround:**

IGFBP2: insulin-like growth factor binding protein 2. IGFBP2 is a member of the ISGBP family which bind various IGFs. IGFBP2 is overexpressed in a wide spectrum of other cancers, including glioma, prostate cancer, synovial sarcoma, neuroblastoma, colon cancer, adrenocortical cancer, lung cancer, Wilms' tumor, and hepatoblastoma. The overexpression of IGFBP2 also correlates with the aggressiveness of some tumors. IGFBP2 activates the expression of matrix metalloproteinase 2, which contributes to cell invasiveness.

**Product:**

Purified antibody in PBS with 0.05% sodium azide.

**Molecular Weight:****Swiss-Prot:**

P18065

**Purification&Purity:**

The antibody was affinity-purified from mouse ascites by affinity-chromatography using epitope-specific immunogen and the purity is > 95% (by SDS-PAGE).

**Applications:**

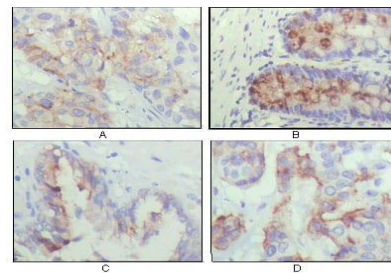
IHC:1/200 - 1/1000

**Storage&Stability:**

Store at 4 °C short term. Aliquot and store at -20 °C long term. Avoid freeze-thaw cycles.

**Isotype:**

Mouse IgG1

**DATA:**

Immunohistochemical analysis of paraffin-embedded human lung cancer (A), rectum (B), prostate (C), colon cancer (D) showing cytoplasmic localization using IGFBP2 mouse mAb with DAB staining.

**Note:**

For research use only, not for use in diagnostic procedure.

**Bioworld Technology, Inc.**

Add: 1660 South Highway 100, Suite 500 St. Louis Park, MN 55416, USA.

Email: [info@bioworld.com](mailto:info@bioworld.com)

Tel: 6123263284

Fax: 6122933841

**Bioworld technology, co. Ltd.**

Add: No 9, weidi road Qixia District Nanjing, 210046, P. R. China.

Email: [info@biogot.com](mailto:info@biogot.com)

Tel: 0086-025-68037686

Fax: 0086-025-68035151