

## BNP monoclonal antibody

Catalog: MB21132

Host: Mouse

Reactivity: Human

### BackGround:

BNP (brain natriuretic peptide) belongs to a family of structurally similar peptide hormones, which includes atrial natriuretic peptide (ANP), BNP, C-type natriuretic peptide (CNP) and urodilatin. ANP and BNP act mainly as cardiac hormones, produced primarily by the atrium and ventricle, respectively, while the gene encoding C-type natriuretic peptide is expressed mainly in the brain. BNP circulates in blood as a peptide hormone with natriuretic, vasodilatory and renin inhibitory properties. It is secreted predominantly by the left ventricular myocytes in response to volume expansion and pressure overload. These peptides are characterized by a common 17 amino acid ring structure with a disulfide bond between two cystein residues. This ring structure shows high homology between different natriuretic.

### Product:

Ascitic fluid containing 0.03% sodium azide.

### Molecular Weight:

### Swiss-Prot:

P16860

### Purification&Purity:

The antibody was affinity-purified from mouse ascites by affinity-chromatography using epitope-specific immuno-

gen and the purity is > 95% (by SDS-PAGE).

### Applications:

IHC:1/200 - 1/1000

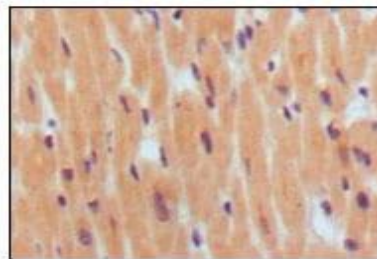
### Storage&Stability:

Store at 4 °C short term. Aliquot and store at -20 °C long term. Avoid freeze-thaw cycles.

### Isotype:

Mouse IgG1

### DATA:



Immunohistochemical analysis of paraffin-embedded human normal myocardium, showing cytoplasmic localization using BNP1 mouse mAb with DAB staining.

### Note:

For research use only, not for use in diagnostic procedure.

### Bioworld Technology, Inc.

Add: 1660 South Highway 100, Suite 500 St. Louis Park, MN 55416, USA.

Email: [info@bioworld.com](mailto:info@bioworld.com)

Tel: 6123263284

Fax: 6122933841

### Bioworld technology, co. Ltd.

Add: No 9, weidi road Qixia District Nanjing, 210046, P. R. China.

Email: [info@biogot.com](mailto:info@biogot.com)

Tel: 0086-025-68037686

Fax: 0086-025-68035151