

HER-2 monoclonal antibody

Catalog: MB21105

Host: Mouse

Reactivity: Human

BackGround:

The C-erbB-2 (HER-2/neu) gene encodes a member of the epidermal growth factor (EGF) receptor family of receptor tyrosine kinases. Amplification or overexpression of this gene has been reported in numerous cancers, including breast and ovarian tumors. High levels of c-erbB-2 were associated with estrogen receptor (ER) and progesterone receptor negativity. Overexpression of the c-erbB-2 oncogene has been shown to be associated with poor prognosis in ovarian and breast cancer. The level of increased Neu expression can be a predictor of disease prognosis.

Product:

Ascitic fluid containing 0.03% sodium azide.

Molecular Weight:

Swiss-Prot:

P04626

Purification&Purity:

The antibody was affinity-purified from mouse ascites by affinity-chromatography using epitope-specific immunogen and the purity is > 95% (by SDS-PAGE).

Applications:

IHC:1/200 - 1/1000

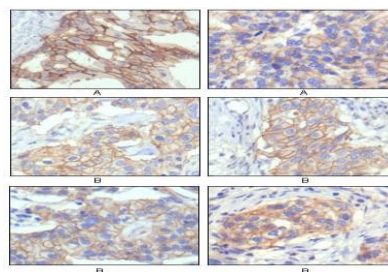
Storage&Stability:

Store at 4 °C short term. Aliquot and store at -20 °C long term. Avoid freeze-thaw cycles.

Isotype:

Mouse IgG2b

DATA:



Immunohistochemical analysis of paraffin-embedded human breast intraductal carcinoma tissue (A) and breast infiltrating ductal carcinoma tissue (B) showing membrane localization using HER-2 mouse mAb with DAB staining.

Note:

For research use only, not for use in diagnostic procedure.

Bioworld Technology, Inc.

Add: 1660 South Highway 100, Suite 500 St. Louis Park, MN 55416, USA.

Email: info@bioworld.com

Tel: 6123263284

Fax: 6122933841

Bioworld technology, co. Ltd.

Add: No 9, weidi road Qixia District Nanjing, 210046, P. R. China.

Email: info@biogot.com

Tel: 0086-025-68037686

Fax: 0086-025-68035151