

GSK3 alpha monoclonal antibody

Catalog: MB21080

Host: Mouse

Reactivity: Human

BackGround:

GSK3 alpha (Glycogen synthase kinase 3 alpha), with 483-amino acid protein (about 53kDa), belongs to the Ser/Thr family of protein kinases, Cdc2/cdkx subfamily, GSK3 subsubfamily, which also includes GSK3 beta. GSK3 is a multifunctional serine/threonine kinase that is usually inactivated by serine phosphorylation in response to extracellular cues. GSK3 is a key regulator of numerous signalling pathways, including cellular responses to Wnt, receptor tyrosine kinases and G-protein-coupled receptors and is involved in a wide range of cellular processes, ranging from glycogen metabolism to cell cycle regulation and proliferation. GSK3 alpha is implicated in the control of several regulatory proteins including glycogen synthase and transcription factors.

Product:

Ascitic fluid containing 0.03% sodium azide.

Molecular Weight:

Swiss-Prot:

P49840

Purification&Purity:

The antibody was affinity-purified from mouse ascites by affinity-chromatography using epitope-specific immuno-

gen and the purity is > 95% (by SDS-PAGE).

Applications:

IHC: 1/200 - 1/1000

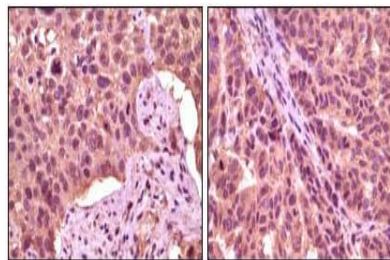
Storage&Stability:

Store at 4 °C short term. Aliquot and store at -20 °C long term. Avoid freeze-thaw cycles.

Isotype:

Mouse IgG2b

DATA:



Immunohistochemical analysis of paraffin-embedded human lung carcinoma (left) and skin carcinoma (right), showing cytoplasmic localization using GSK3 alpha mouse mAb with DAB staining.

Note:

For research use only, not for use in diagnostic procedure.

Bioworld Technology, Inc.

Add: 1660 South Highway 100, Suite 500 St. Louis Park, MN 55416, USA.

Email: info@bioworld.com

Tel: 6123263284

Fax: 6122933841

Bioworld technology, co. Ltd.

Add: No 9, weidi road Qixia District Nanjing, 210046, P. R. China.

Email: info@biogot.com

Tel: 0086-025-68037686

Fax: 0086-025-68035151